



PRO & COMP
SERVICE & TRAVEL GUIDE

HAYES

PERFORMANCE SYSTEMS



Hayes Performance Systems
5800 W. Donges Bay Rd.
Mequon, WI 53092

Tel: 888.686.3472
Email: techsupport@hayesbicycle.com
Web: www.hayescomponents.com

Hayes Components Europe
Dirnismaning 20 a
85748 Garching (b. Munich)
Germany
ph: +49 (0)89 203237450

Email: techsupportEU@hayesbicycle.com
Web: www.hayescomponents.com

HAYES PERFORMANCE SYSTEMS WARRANTY

Limited Warranty:

HAYES warrants its products to be free from defects in materials or workmanship under normal intended use for a period of one year (two years in European Union countries) from the date of purchase, subject to normal wear and tear. Unless otherwise prohibited by law, any such defective products will be repaired or replaced at the option of HAYES when received with proof of purchase, freight prepaid. This warranty does not cover breakage, bending, or damage that may result from crashes or falls. This warranty does not cover any defects or damage caused by alterations or modifications of HAYES products or by normal wear, accidents, improper maintenance, damages caused by the use of HAYES products with parts of different manufacturers, improper use or abuse of the product, application or uses other than those set forth in the HAYES instruction manual or failure to follow the instructions contained in the applicable HAYES instruction manual. Instruction manuals can be found on-line at www.hayescomponents.com. Any modifications made by the BUYER or any subsequent user will render the warranty null and void. This warranty does not apply when the serial number or production code has been deliberately altered, defaced or removed from the product. The cost of normal maintenance or replacement of service items, which are not defective, shall be the BUYER's responsibility. If permitted by local law, this warranty is expressly in lieu of all other warranties (except as to title), express or implied, and in particular and without limitation HAYES disclaims the implied warranties of merchantability or fitness for purpose. If for any reason warranty work is necessary, return the component to the place of purchase or contact your dealer or local HAYES distributor. In the USA, contact HAYES for a return authorization number (RA#) at (888) 686-3472. At that time, instructions for repair, return, or replacement shall be given. Customers in countries other than the USA should contact their dealer or local HAYES distributor.

Limitation of Liability.

Unless required by mandatory law, HAYES shall not be liable for any incidental, indirect, special or consequential damages.

This warranty does not apply to normal wear and tear. Wear and tear parts are subject to damage through normal use, failure to service according to recommendations or riding in conditions other than recommended. The cost of normal maintenance or replacement of service items, which are not defective, shall be paid for by the original purchaser. Wear and tear parts that will not be replaced under warranty include but are not limited to the following:

Bushings	Dust Seals	Stripped or Worn Bolts
Rear Shock	Fork/Shock Air Seals and/or O-rings	Remote Lockout Cable
Mount Hardware	Bearings	Gloves
Handlebar grips	Upper Stanchion Tubes	Lower Stanchion Tubes(Dorado)
Tubeless Valves	Tubeless Tape	

INTRODUCTION

This manual is intended to guide the user through the steps necessary to fully service and maintain the Machete line of suspension forks.

! WARNING !

We highly recommend that service to this fork be performed by a certified bicycle mechanic. Failure to follow instructions presented in this manual could lead to serious injury or death. Any questions about the servicing of this fork or the manual itself should be directed to Manitou Customer Support at:

Phone: 888-686-3472

Email: techsupport@hayesbicycle.com

! WARNING !

Suspension forks by design can contain pre-loaded springs, gases and fluids under extreme pressures. Warnings contained in this manual must be observed to avoid damage to fork, serious injury or even death.

TABLE OF CONTENTS

SECTION	PAGE NUMBER
Tools and Materials	6
Casting Removal & Service	7-9
Air Spring Service	10-14
Damper Service	15-17
Casting Installation	18-20
Compression Damper Install	21-25
Exploded Diagrams	26-31
Rebuild Kit Diagrams	32-37
Compression Rod Kit/Travel Settings	38

TOOLS AND MATERIALS

Below is a list of tools and materials necessary for servicing the Machete fork.

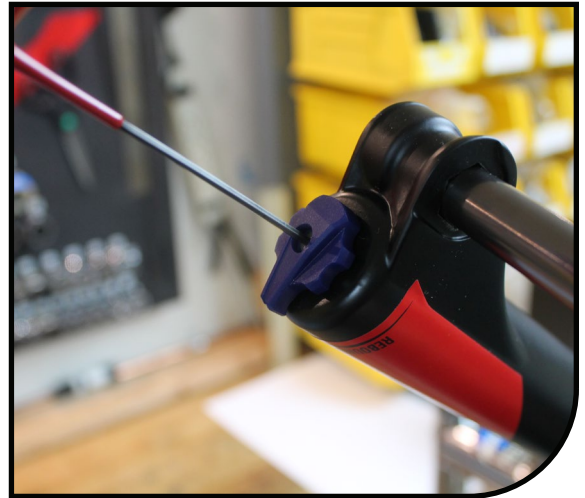
- Safety Glasses
- Nitrile Gloves
- Lint-Free Rags
- Slickoleum™ Grease
 - 10-Oz Tub – Manitou Part Number 20-32929
 - 5MI Tube – Manitou Part Number 141-33604-K001
- Semi-Bath Oil, 5/40W Synthetic
 - Manitou Part Number 85-0022
- 5W Maxima Fork Oil
 - Manitou Part Number 85-0023
- 32mm Seal Press
 - Manitou Part Number 172-31122
- 32mm Rebuild Kit
 - Manitou Part Number 141-28528-K009
- 8mm Hex Socket
- 2mm Hex Wrench
- 12mm Socket
- 20mm Socket
- 24mm Socket
- 22mm Box End Wrench
- 12mm Box End Wrench
- Torque Wrench Ratchet
- 22mm Crow's Foot
- Fork/Shock Pump
- Pick
- Adjustable Wrench
- Downhill Tire Lever Or Flat Blade Screwdriver

If your fork has the Kwik Toggle damper then you will need;

- Manitou Tool Kit - Manitou Part Number 172-31133 (Includes The 3 Tools Below)
 - Manitou Cassette Tool
 - Manitou Thin Walled 8mm Socket
 - Manitou 24mm Flat Ground Socket

CASTING REMOVAL & SERVICE

- 1 Remove rebound knob using a 2mm hex wrench.



- 2 Insert an 8mm hex wrench into the end of the rebound damper rod and turn the rod **clockwise** until it is disengaged from the casting and can be pushed into the casting.



- 3 Use a 12mm wrench to remove the compression rod bolt.



CASTING REMOVAL & SERVICE

- 4** Remove casting from fork. It is recommended this be done over a drain pan as the lower casting contains semi-bath oil. Allow oil in casting to drain out before continuing to next step.



- 5** Using a downhill tire lever or similar tool, gently pry the dust seals out of the casting.



- 6** Remove old foam wiper rings. Apply semi-bath fluid to the new foam wiper rings and install into fork casting.



CASTING REMOVAL & SERVICE

7

Remove springs from lip of dust seals. Using the Manitou 32mm Seal Press or large socket press in the dust seals. Reinstall springs onto seals.



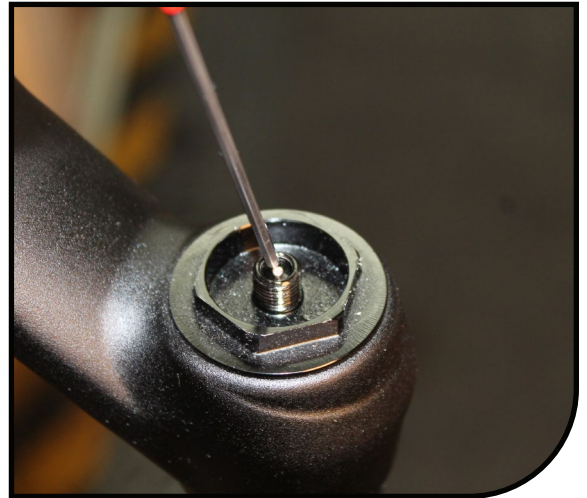
AIR SPRING SERVICE

1

! WARNING !

Suspension forks by design can contain preloaded springs, gases and fluids under extreme pressures. Warnings contained in this manual must be observed to avoid damage to fork, serious injury or even death.

Release air from the fork. Depress Schrader valve a few times to ensure all air is released.



2

Remove air cap using a 20mm socket.



3

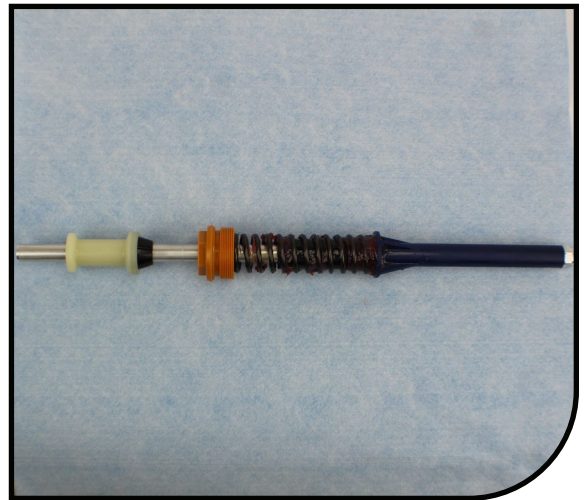
Invert the fork and use a 22mm box end wrench to unthread the air spring assembly from the stanchion.



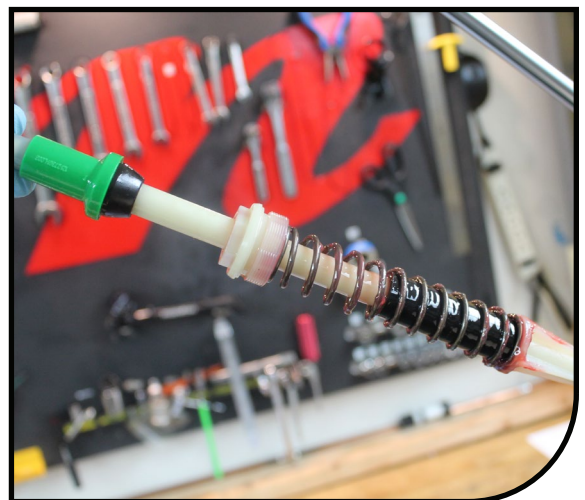
AIR SPRING SERVICE

4

Remove air spring assembly from the stanchion. Clean spring and rod assembly and re-grease. The air spring pictured to the right is from the **Machete Pro**.



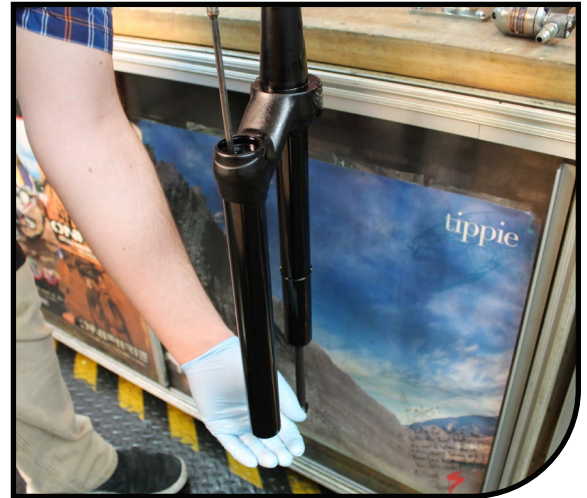
The air spring pictured to the right is from the **Machete Comp**.



AIR SPRING SERVICE

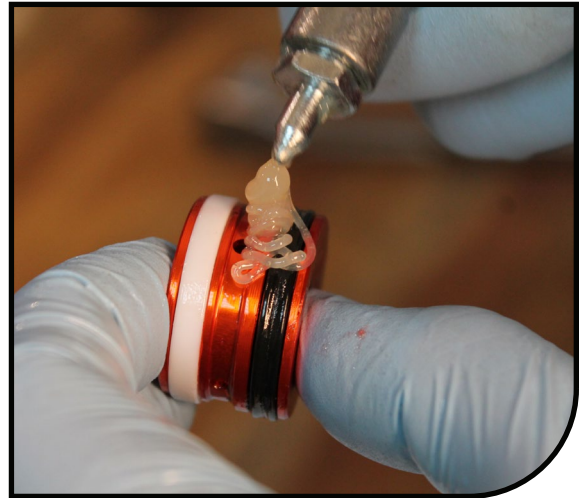
5

Using a long dowel rod or similar tool push the air piston down the stanchion and out of the bottom. Be careful to not scratch the inner surface of the stanchion. Once the piston is removed clean the inside of the stanchion with isopropyl alcohol and a lint free towel. Inspect the inside and outside of the stanchion for scratches or other damage.



AIR SPRING SERVICE

- 6** Liberally grease the piston quad seal and outer surface with Slickoleum™ grease.



- 7** Install greased air piston into the top of the stanchion and push it down past the threads.



- 8** Add 8cc's of Slickoleum™ grease to the top of the air piston.

AIR SPRING SERVICE

9

Install air cap onto stanchion.
Tighten to 60-80 in lb [6.8-9.0 N m].



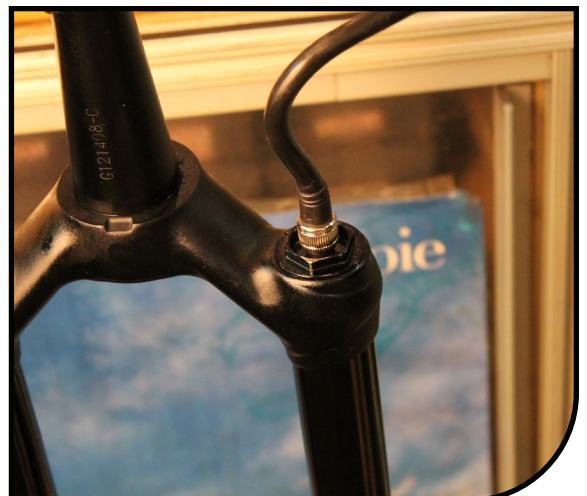
10

Install air spring assembly into stanchion. Using a 22mm crow's foot, tighten assembly end cap to 80-100 in lb [9.0-11.3 N m].



11

Attach a shock pump and inflate air leg to 40-50PSI. This will aid in installing the casting later.



DAMPER SERVICE

- 1** The Machete fork can have two compression damper configurations, ABS+ or Kwik Toggle. The following instructions will work for both. Remove ABS+ or Kwik Toggle knob using a 2mm Allen wrench. If the fork has ABS+, remove knob carefully as there are two detent ball bearings on springs below the knob.



(ABS+ knob detent ball and springs.)

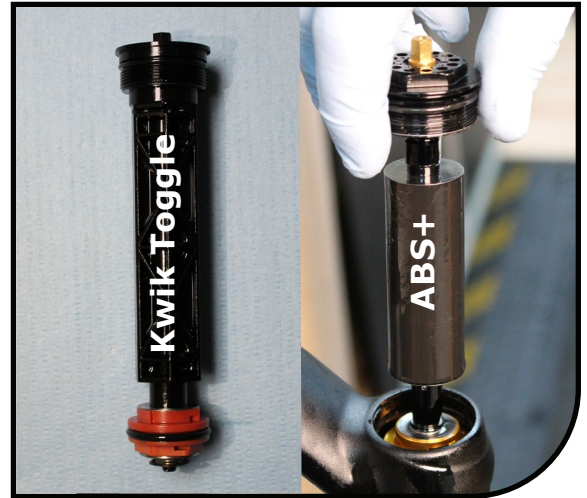


- 2** Unthread ABS+ compression damper assembly from the stanchion using a 24mm socket and ratchet. If the fork has the Kwik Toggle compression damper you will need to use the Manitou Cassette Tool and 1" wrench or socket to remove the damper.

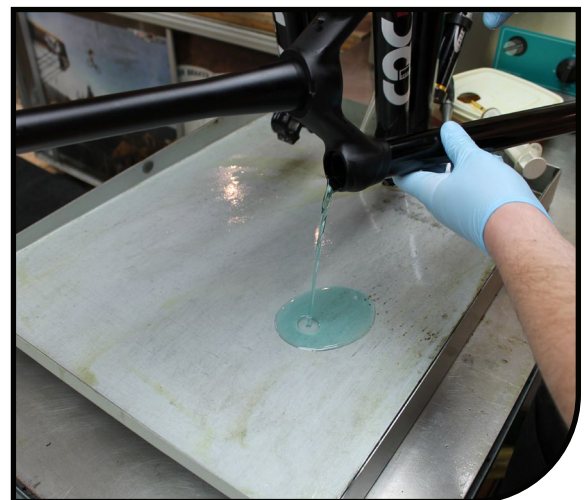


DAMPER SERVICE

- 3 Remove Kwik Toggle or ABS+ or compression damper assembly from the stanchion.



- 4 Pour damper oil into a catch pan.



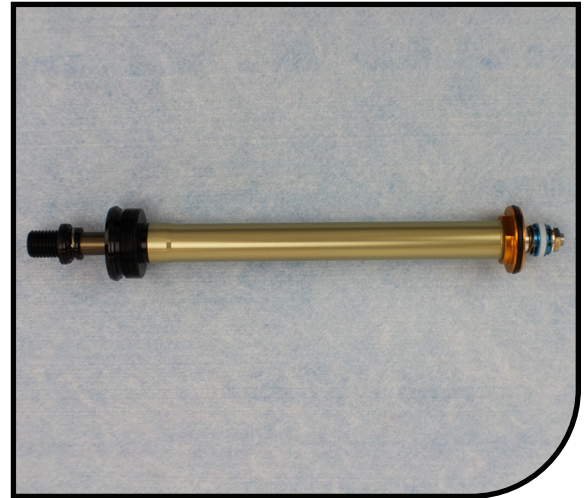
- 5 Using a 22mm box end wrench, unthread the rebound damper assembly from the fork stanchion.



DAMPER SERVICE

6

Remove rebound damper assembly from the fork. Once the damper assembly is removed, clean the inside of the stanchion with isopropyl alcohol and a lint free towel. Inspect the inside and outside of the stanchion for scratches and other damage. Inspect rebound damper for damage as well. Replace if necessary. The rebound damper pictured to the right is from the **Machete Pro**.



The rebound damper pictured to the right is from the **Machete Comp**.



7

Install rebound damper into stanchion. Using a 22mm crow's foot and torque wrench, tighten the rebound damper assembly end cap to 80-100 in lb [9.0-11.3 N m].

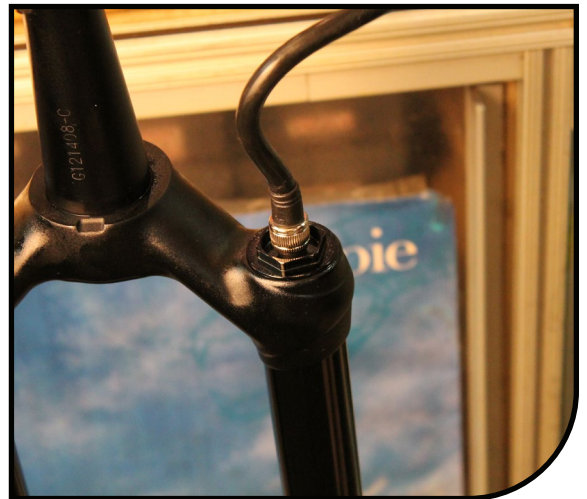


CASTING INSTALL

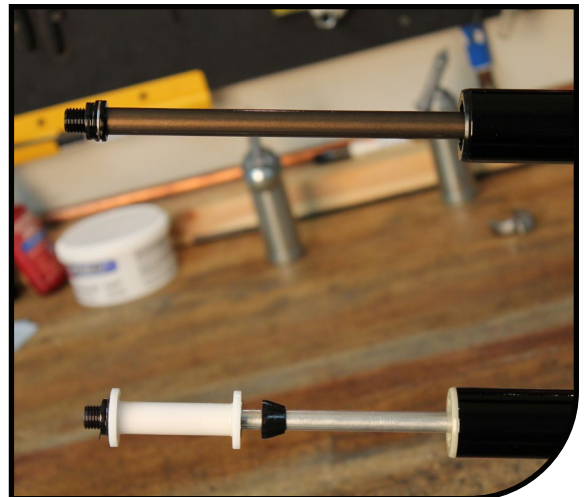
- 1 Before filling the fork with fork oil and installing the ABS+ or Kwik Toggle compression damper, we must first install the casting. This ensures a correct oil level. First apply a generous amount of grease to the dust seal.



- 2 Fill the air chamber with a small amount of air (40-50PSI). This will extend the air spring assembly and make casting installation easier.



- 3 Fully extend the rebound damper rod.



CASTING INSTALL

4

Slide casting onto the stanchion assembly. Only slide the casting down about halfway at this point. Take care that the seals do not fold over upon installation



5

Insert 15cc's (15ml) of semi-bath into each casting leg. Once the semi-bath is in the legs slide the casting the rest of the way onto the stanchion assembly.



6

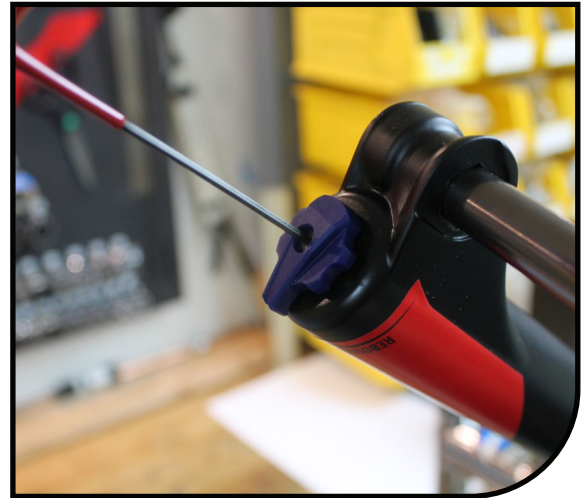
Using an 8mm hex wrench tighten the rebound damper rod and air spring assembly to 35–40 in lb [3.95–4.5 N m] by turning them **counter-clockwise**. Do not overtighten, doing so can damage the end of the rods.



CASTING INSTALL

7

Install the rebound knob using a 2mm hex wrench. Add a small drop of blue Loctite to the screw before installation to prevent the screw from backing out during riding.



8

Install compression rod bolt. It helps to have at least 50psi in the air chamber when tightening down the bolt to the proper torque. Use a 12mm socket and torque wrench and tighten to 45–55 in lb [5.1–6.2 N m].



COMPRESSION DAMPER INSTALL

- 1 Pour 5wt Maxima fork oil into the damper leg. Fill it up about 3/4 full.



- 2 Place a lint-free towel over the opening in the damper leg and compress the fork 10-15 times.



- 3 Pour additional 5wt fork oil into the damper leg until the oil height (space from the top of the damper leg to the top of the oil) is set at the proper level. See following page for the correct oil height depending on compression damper type and fork travel. An oil height setting tool used for motorcycle forks similar to the one pictured makes this job easier.



COMPRESSION DAMPER INSTALL

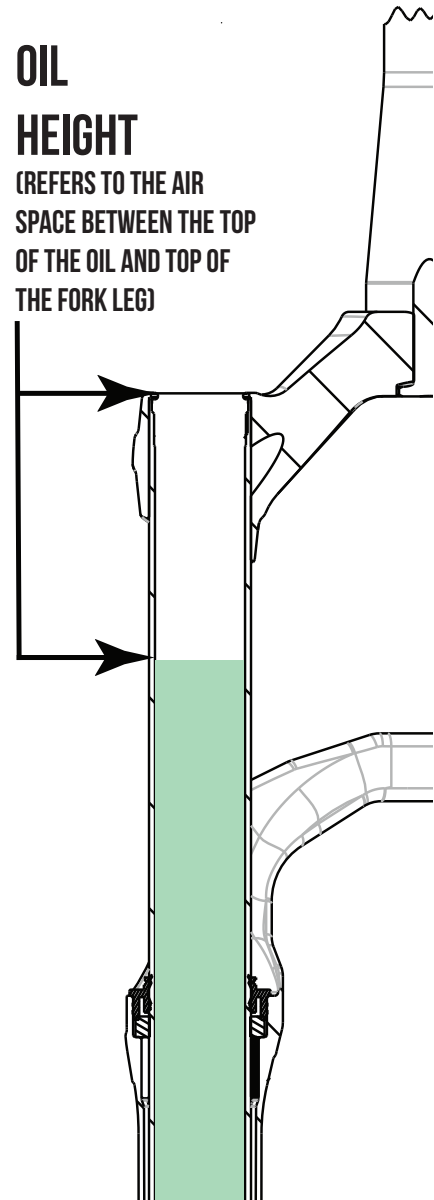


OIL HEIGHT CHART 2017-2018

FORK MODEL	OIL HEIGHT
MASTODON PRO	75MM
MASTODON COMP	87MM
MARKHOR (80/100MM)	92MM
MARKHOR (120MM)	97MM
MATTOC PRO	75MM
MATTOC COMP	87MM
MACHETE (ABS+)	87MM
MACHETE (KWIK TOGGLE, 90-120MM)	87MM
MACHETE (KWIK TOGGLE, 130-140MM)	91MM
CIRCUS COMP/EXPERT	87MM
CIRCUS SPORT (FFD)	83MM
R7 PRO	83MM
DORADO (SEE DORADO SERVICE GUIDE)	180-190MM

OIL HEIGHT

(REFERS TO THE AIR SPACE BETWEEN THE TOP OF THE OIL AND TOP OF THE FORK LEG)



NOTE

1. OIL HEIGHT IS SET WITH COMPRESSION DAMPER REMOVED.
2. OIL HEIGHT IS SET WITH FORK FULLY EXTENDED AND CASTING INSTALLED.

COMPRESSION DAMPER INSTALL

4 Insert the ABS+ or Kwik Toggle compression damper into the damper leg. Ensure the damper is set in the unlocked position when installing.



5 If installing an ABS+ damper use a 24mm socket and torque wrench, tighten the damper to 60–80 in lb [6.8–9.0 N m]. If installing a Kwik Toggle damper use a 1" socket or crow's foot, the Mattoc Cassette tool and a torque wrench to tighten down the damper to the same torque specification.



6 If the damper is an ABS+, install springs and ball bearings into ABS+ top cap. A small dab of grease on top of the spring can help hold the ball bearings in place.



COMPRESSION DAMPER INSTALL

- 7** Using a 2mm Hex wrench, install the ABS+ or Kwik Toggle knob.



- 8** Clean fork and use a shock pump to set to desired pressure. Pressure charts on next page for reference.

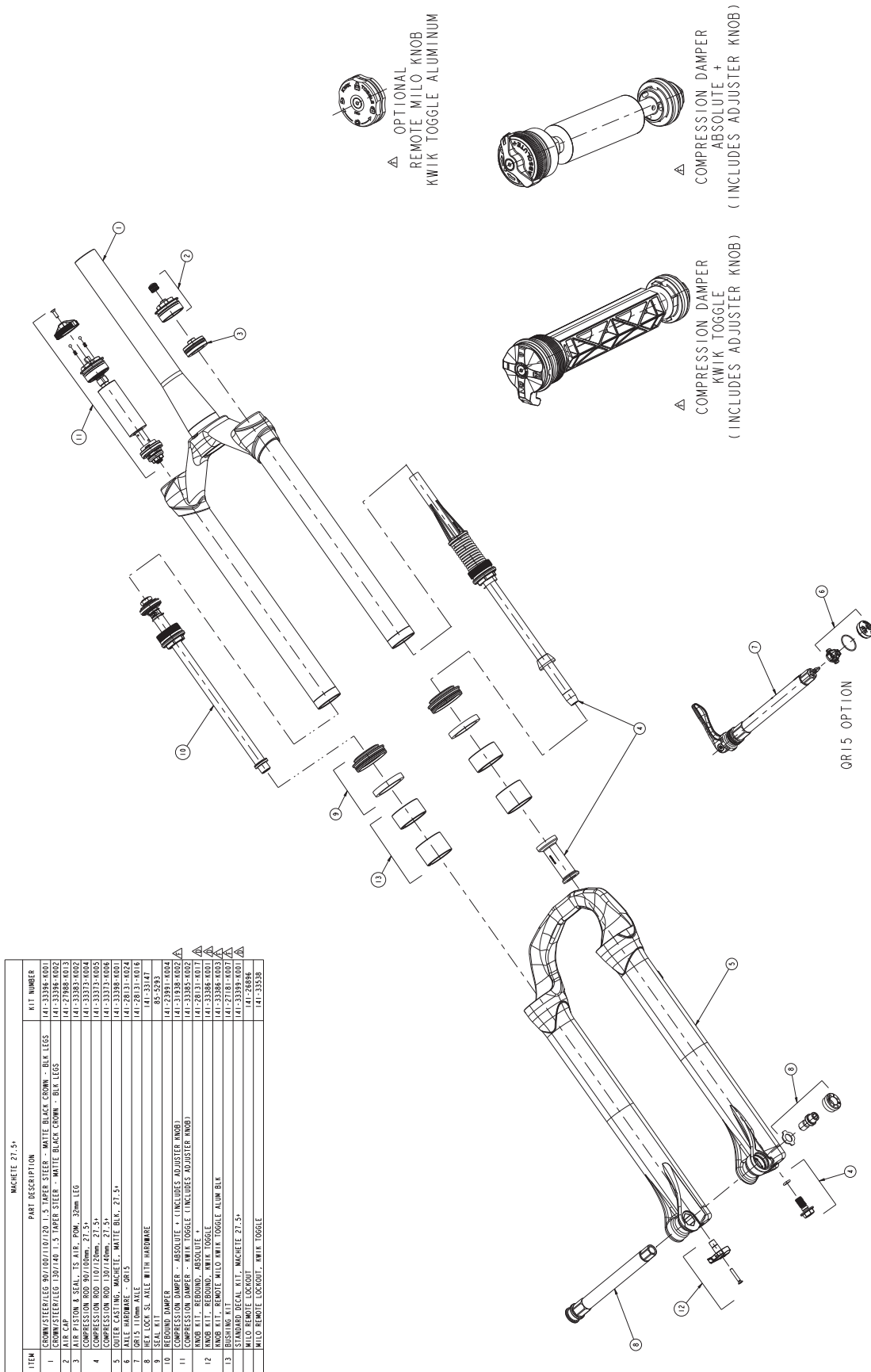


COMPRESSION DAMPER INSTALL

Machete Pro			
Rider Weight		Air Pressure	
LBS	KGS	PSI	[BAR]
>220	>100	76-84	5.2-5.8
200	91	65-76	4.5-5.2
170	77	53-65	3.7-4.5
140	64	42-53	2.9-3.7
12	55	34-42	2.3-2.9
! WARNING !			
MAX PRESSURE NOT TO EXCEED 120 PSI [8.3 BAR]			

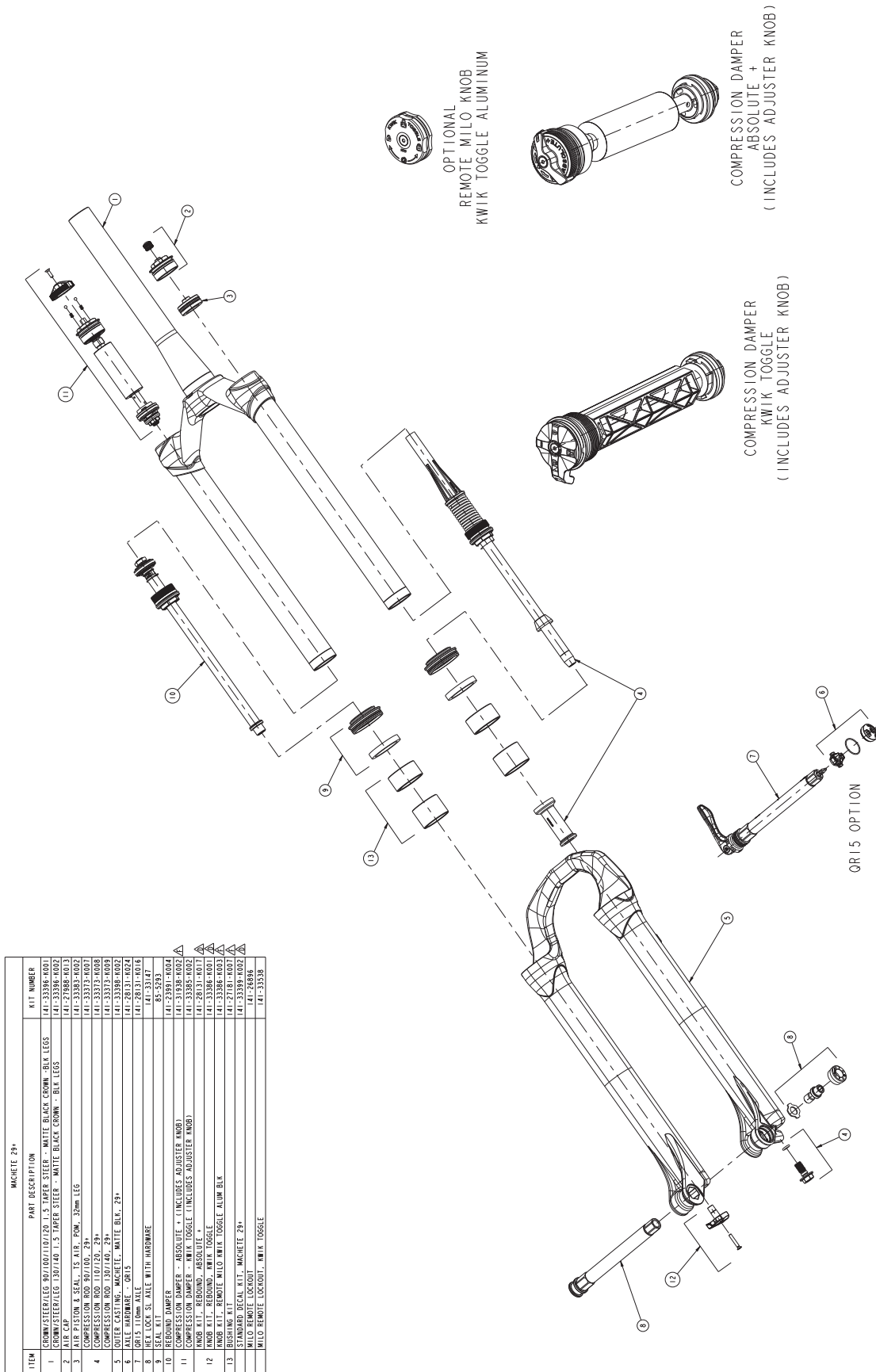
Machete Comp			
Rider Weight		Air Pressure	
LBS	KGS	PSI	[BAR]
>220	>100	75-95	5.2-6.6
200	91	72-87	5.0-6.0
170	77	68-80	4.7-5.5
140	64	64-75	4.4-5.2
12	55	55-72	3.8-5.0
! WARNING !			
MAX PRESSURE NOT TO EXCEED 120 PSI [8.3 BAR]			

MACHETE 110 COMP 27.5+ EXPLODED VIEW



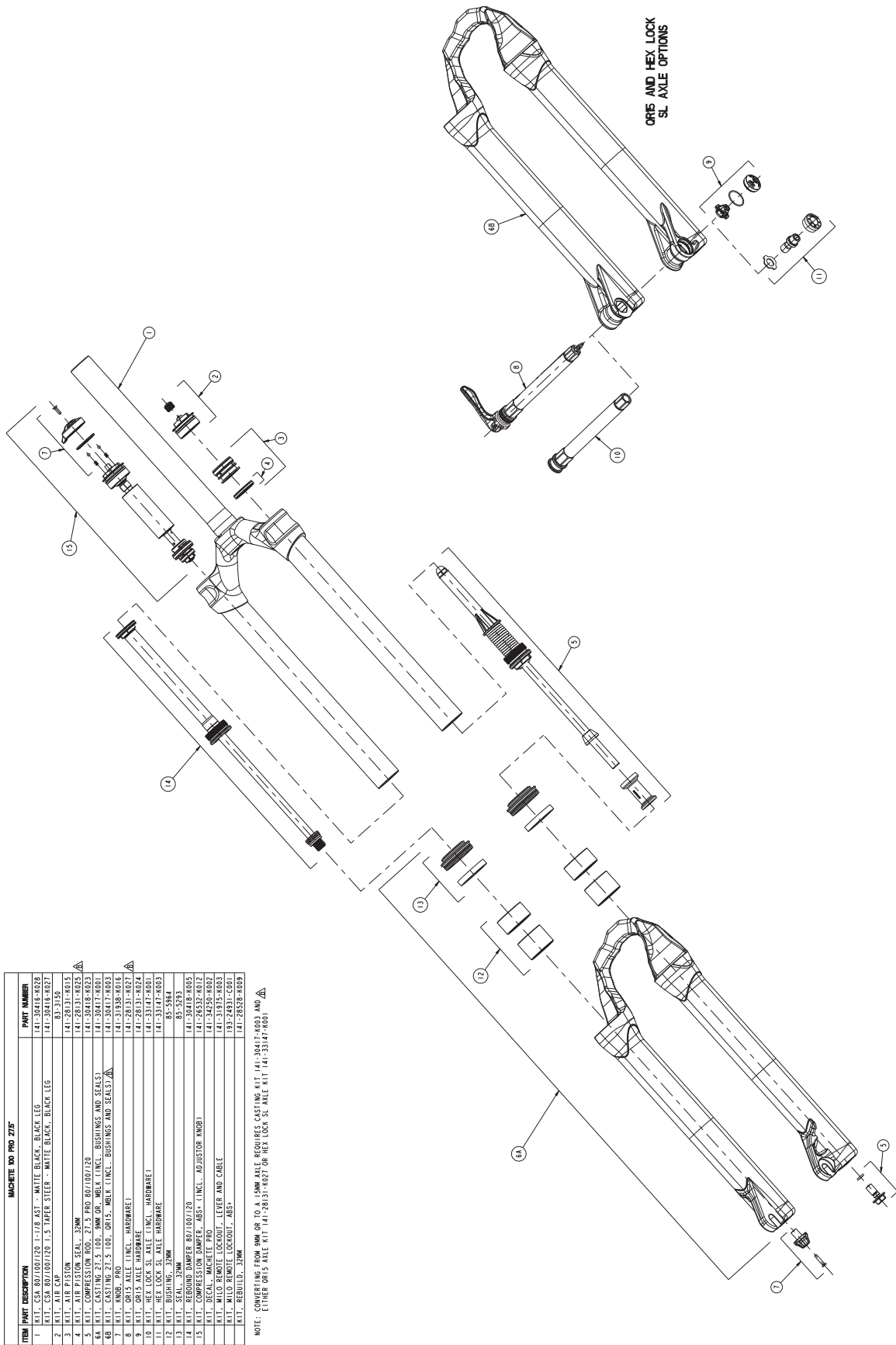
MACHETE 27.5+		
ITEM	PART DESCRIPTION	RIT NUMBER
1	CROWN/STEEER/LEG 90/100/110/120 1.5 TAPER STEER - WHITE BLACK CROWN - BLK LEGS	141-33394-001
2	CROWN/STEEER/LEG 130/140 1.5 TAPER STEER - WHITE BLACK CROWN - BLK LEGS	141-33394-002
3	1.5 TAPER STEER - WHITE	141-33394-003
4	1.5 TAPER STEER - BLACK	141-33394-004
5	1.5 TAPER STEER - WHITE	141-33394-005
6	1.5 TAPER STEER - BLACK	141-33394-006
7	OR 15 LOWER LEG	141-33394-007
8	HEX LOCK SL. AXLE WITH HARDWARE	141-33147
9	SEAL KIT	85-5793
10	SPACER	141-33394-008
11	COMPRESSION DAMPER - ABSOLUTE + (INCLUDES ADJUSTER KNOB)	141-33394-009
12	COMPRESSION DAMPER - KWIK TOGGLE (INCLUDES ADJUSTER KNOB)	141-33394-010
13	COMPRESSION DAMPER - ABSOLUTE +	141-33394-011
14	COMPRESSION DAMPER - KWIK TOGGLE	141-33394-012
15	STANDARD DECAL KIT, MACHETE 27.5+	141-33394-013
16	STANDARD DECAL KIT, MACHETE 27.5+	141-33394-014
17	MILO REMOTE LOCKOUT	141-28894
18	MILO REMOTE LOCKOUT, KWIK TOGGLE	141-33394

MACHETE 110 COMP 29+ EXPLODED VIEW



ITEM	PART DESCRIPTION	KIT NUMBER
1	CROWN STEERER 80/100/120/135 TAPER STEEL - WHITE BLACK CROWN - BULK LEGS	141-3338-K031
2	AIR CAP	141-27888-K013
3	AIR PISTON & SEAL - 15 AIR - POM - 32mm LEG	141-33383-K002
4	COMPRESSION ROD 90/100 - 29+	141-33313-K001
5	COMPRESSION ROD 120/120 - 29+	141-33313-K008
6	COMPRESSION ROD 135/135 - 29+	141-33313-K008
7	OUTER CASTING - ORIS	141-33388-K002
8	AXLE HARDWARE - ORIS	141-28131-K024
9	ORIS 1.0mm AXLE	141-28131-K016
10	ORIS 1.0mm AXLE WITH HARDWARE	141-33147
11	REBOUND DAMPER	141-23881-K004
12	COMPRESSION DAMPER - ABSOLUTE + (INCLUDES ADJUSTER KNOB)	141-31938-K002
13	COMPRESSION DAMPER - KWIK TOGGLE (INCLUDES ADJUSTER KNOB)	141-33388-K002
14	MILO REMOTE LOCKOUT	141-26886
15	MILO REMOTE LOCKOUT - KWIK TOGGLE	141-33338

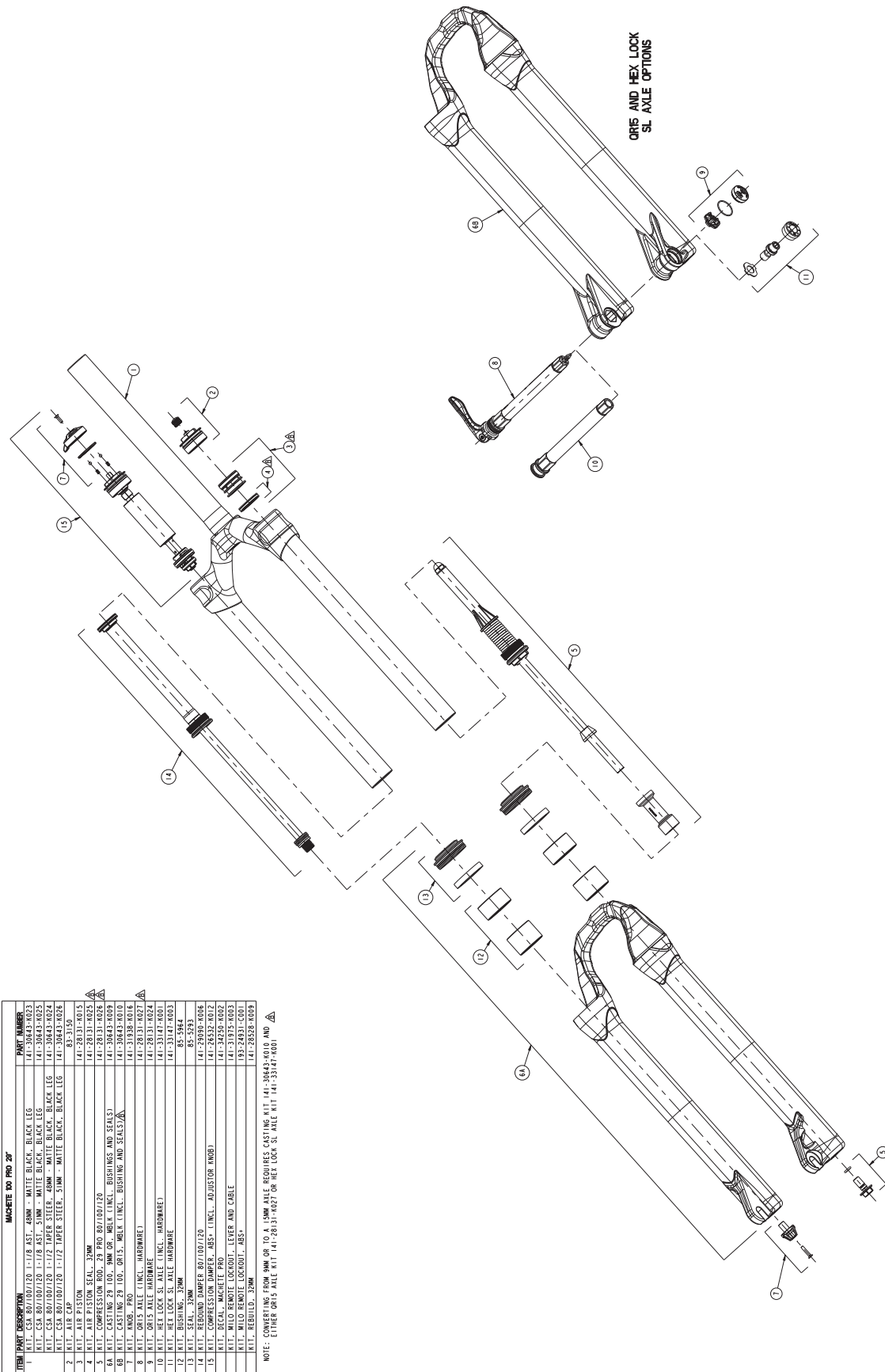
MACHETE 100 PRO 27.5 EXPLODED VIEW



ITEM	PART DESCRIPTION	PART NUMBER
1	KIT, CSA 80/100/120 1.1/8 AST - MATTE BLACK, BLACK LEG	141-30415-K028
2	KIT, CSA 80/100/120 1.5 TAPER STEER - MATTE BLACK, BLACK LEG	141-30415-K021
3	KIT, AIR CAP	83-3150
4	PISTON	141-28331-K015
5	SEAL, 32MM	141-28331-K015
6	COMPRESSION ROD, 27.5 PRO 80/100/120	141-30415-K023
6A	KIT, CASTING 27.5 100, 9MM DR., WELK (INCL. BUSHINGS AND SEALS)	141-30417-K001
7	KIT, CASTING 27.5 100, 9MM DR., WELK (INCL. BUSHINGS AND SEALS)	141-30417-K001
8	KIT, W/O REMOTE LOCKOUT, LEVER AND CABLE	141-31975-K003
8	KIT, W/O REMOTE LOCKOUT, ABS*	193-24931-C001
9	KIT, W/O REMOTE LOCKOUT, ABS*	193-24931-C001
10	HEX LOCK SL AXLE (INCL. HARDWARE)	141-33147-K001
11	HEX LOCK SL AXLE (INCL. HARDWARE)	141-33147-K003
12	BUSHING, 32MM	85-5864
13	SEAL, 32MM	85-5893
14	COMPRESSION DAMPER, ABS* (INCL. ADJUSTOR W/O)	141-24519-K012
15	COMPRESSION DAMPER, ABS* (INCL. ADJUSTOR W/O)	141-24519-K012
16	W/O REMOTE LOCKOUT, LEVER AND CABLE	141-31975-K003
17	W/O REMOTE LOCKOUT, ABS*	193-24931-C001
17	REBUILT, 32MM	141-28332-K009

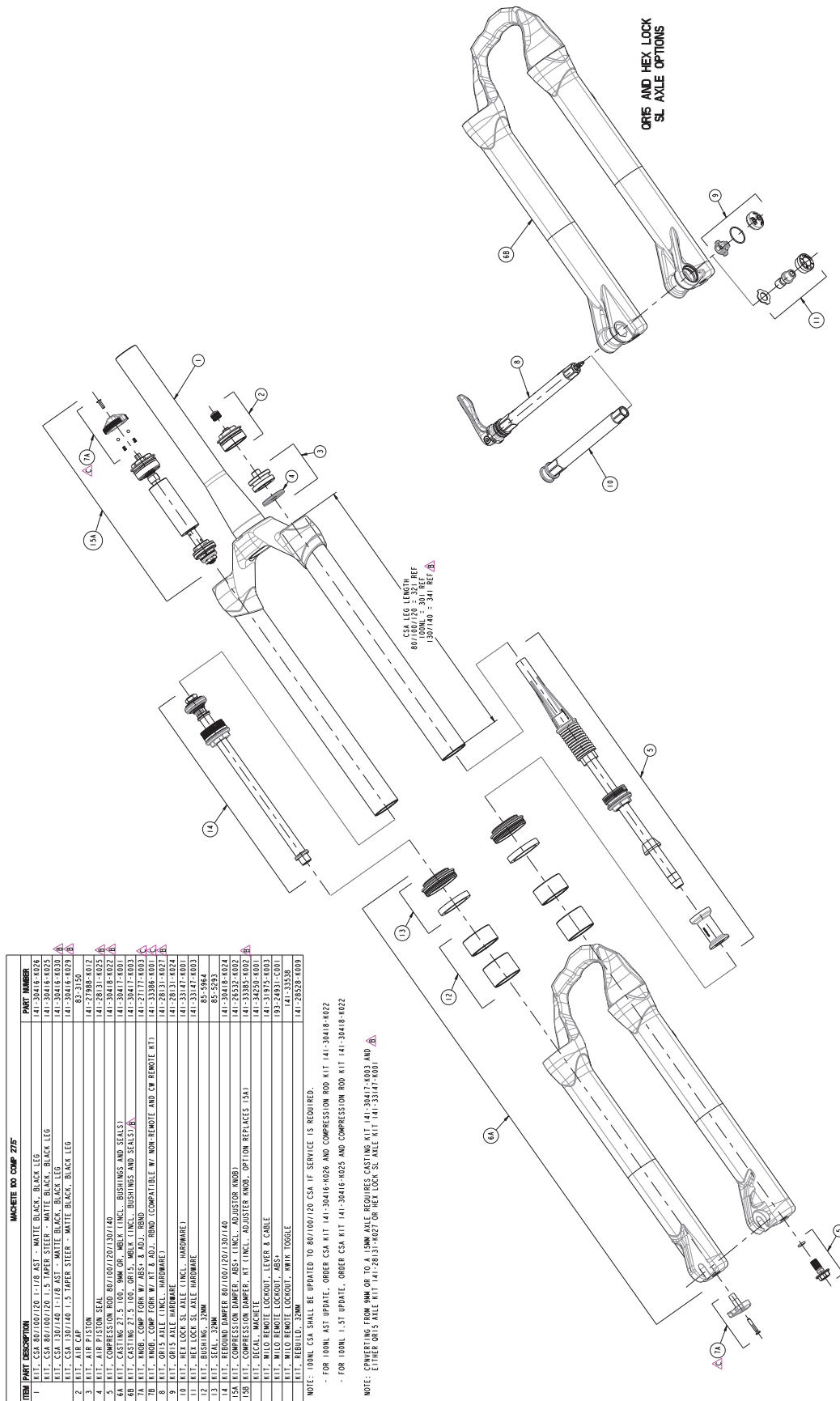
NOTE: CONVERTING FROM 9MM DR. TO A 15MM AXLE REQUIRES CASTING KIT 141-30417-K003 AND EITHER ORIS AXLE KIT 141-28331-K027 OR HEX LOCK SL AXLE KIT 141-33147-K001

MACHETE 100 PRO 29 EXPLODED VIEW

| ITEM | PART DESCRIPTION | PART NUMBER |
| --- | --- | --- |
| 1 | 1. KIT, FORK, 1-1/8" ASST. 30MM - WHITE BLACK, BLACK LEG | 141-30643-0025 |
| 2 | 2. KIT, FORK, 1-1/8" ASST. 30MM - WHITE BLACK, BLACK LEG | 141-30643-0025 |
| 3 | 3. KIT, FORK, 1-1/8" ASST. 30MM - WHITE BLACK, BLACK LEG | 141-30643-0025 |
| 4 | 4. KIT, FORK, 1-1/8" ASST. 30MM - WHITE BLACK, BLACK LEG | 141-30643-0025 |
| 5 | 5. KIT, FORK, 1-1/8" ASST. 30MM - WHITE BLACK, BLACK LEG | 141-30643-0025 |
| 6A | 6A. KIT, CASTING 29 100, 30MM OR, WELK (INCL. BUSHINGS AND SEALS) | 141-30643-0010 |
| 6B | 6B. KIT, CASTING 29 100, ORIS, WELK (INCL. BUSHING AND SEALS) | 141-30643-0010 |
| 7 | 7. KIT, ORIS AXLE (HARDWARE) | 141-28131-0027 |
| 8 | 8. KIT, ORIS AXLE (HARDWARE) | 141-28131-0027 |
| 9 | 9. KIT, ORIS AXLE (HARDWARE) | 141-28131-0027 |
| 10 | 10. KIT, HEX LOCK SL AXLE (INCL. HARDWARE) | 141-33147-0003 |
| 11 | 11. KIT, HEX LOCK SL AXLE (HARDWARE) | 141-33147-0003 |
| 12 | 12. KIT, SEAL, 30MM | 85-5239 |
| 13 | 13. KIT, SEAL, 30MM | 85-5239 |
| 14 | 14. KIT, REBOUND DAMPER 80/100/120 | 141-29090-0006 |
| 15 | 15. KIT, COMPRESSION DAMPER, ABS* (INCL. ADJUSTOR ROD) | 141-26532-0012 |
| 16 | 16. KIT, BEARING, MACHETE PRO | 141-24250-0002 |
| 17 | 17. KIT, BEARING, MACHETE PRO | 141-24250-0002 |
| 18 | 18. KIT, M10 REMOTE LOCKOUT - ABS* | 103-24831-0001 |
| 19 | 19. KIT, M10 REMOTE LOCKOUT - ABS* | 103-24831-0001 |
| 20 | 20. KIT, REBUILD, 30MM | 141-28528-0009 |

NOTE: CONVERTING FROM 9MM OR TO A 15MM AXLE REQUIRES CASTING KIT 141-30643-0010 AND 141-33147-0003.
NOTE: EITHER ORIS AXLE KIT 141-28131-0027 OR HEX LOCK SL AXLE KIT 141-33147-0003

MACHETE 100 COMP 27.5 EXPLODED VIEW

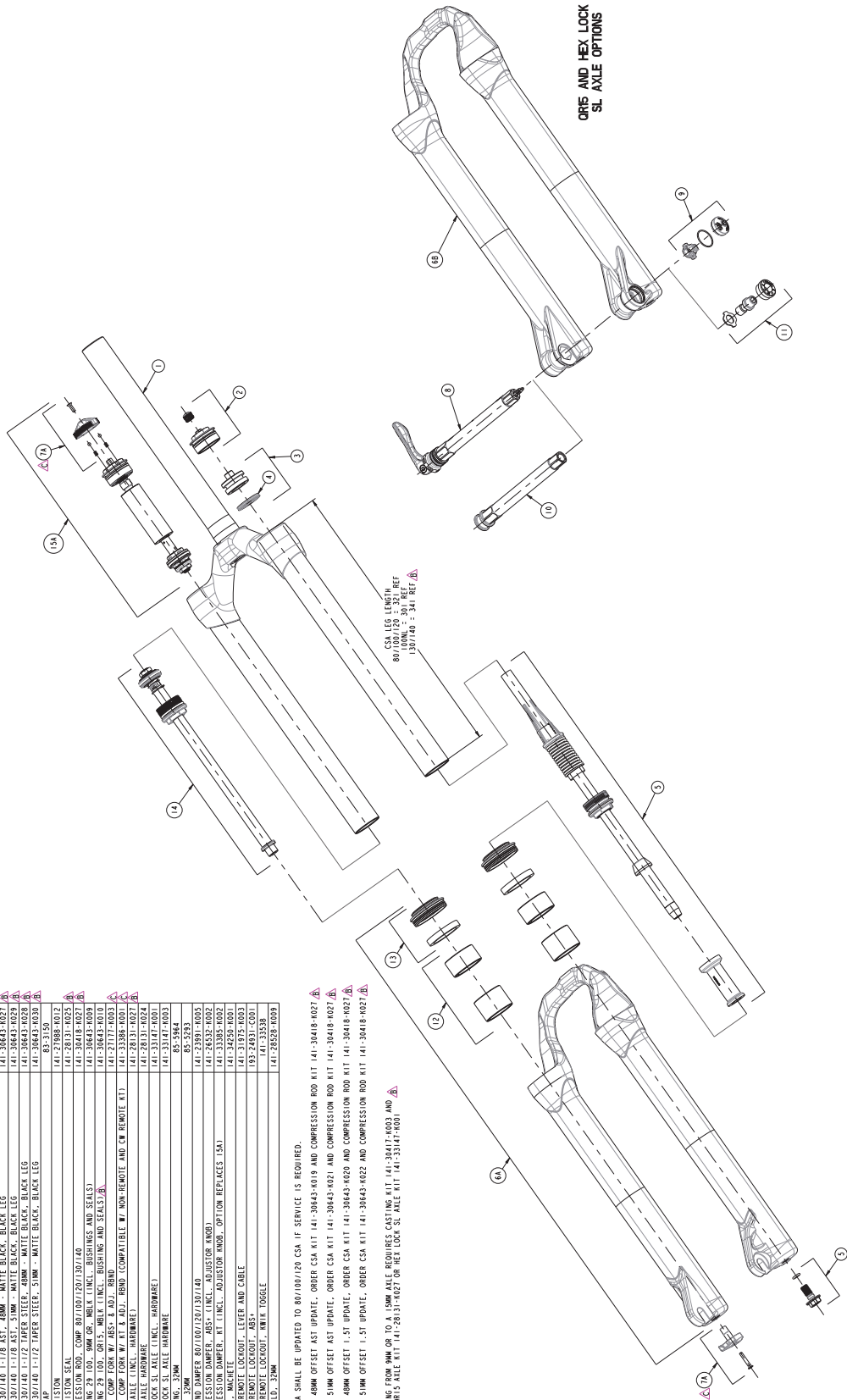


MACHETE 100 COMP 27.5		
ITEM	PART DESCRIPTION	PART NUMBER
1	KIT, CSA 80/100/120, 1-1/8 AS1 - WHITE BLACK, BLACK LEG	141-30416-0026
1	KIT, CSA 80/100/120, 1-5 TAPER STEER - WHITE BLACK, BLACK LEG	141-30416-0025
1	KIT, CSA 130/140, 1-1/8 AS1 - WHITE BLACK, BLACK LEG	141-30416-0030
1	KIT, CSA 130/140, 1-5 TAPER STEER - WHITE BLACK, BLACK LEG	141-30416-0029
2	KIT, AIR CAP	85-5150
3	KIT, AIR PISTON	141-27888-0012
4	KIT, AIR PISTON SEAL	141-28131-0025
5	KIT, COMPRESSION ROD 80/100/120/130/140	141-30418-0022
6	KIT, LOWER FORK LEG 27.5 100, ORIS - BUSHINGS AND SEALS	141-30417-0023
7A	KIT, CASTING 27.5 100, ORIS - W/EX L INCL. - BUSHINGS AND SEALS	141-30417-0023
7B	KIT, KNOB, COMP FORK W/ ABS* & ADJ. RND	141-27177-0023
8	KIT, ORIS AXLE (INCL. - HARDWARE)	141-33386-0001
9	KIT, ORIS AXLE (INCL. - HARDWARE)	141-28131-0027
10	KIT, HEX LOCK SL AXLE (INCL. - HARDWARE)	141-33147-0024
11	KIT, HEX LOCK SL AXLE (INCL. - HARDWARE)	141-33147-0023
12	KIT, BUSHING - 32MM	85-5964
13	KIT, SEAL - 32MM	85-5293
14	KIT, LOWER FORK LEG 27.5 100, ORIS - W/EX L INCL. - BUSHINGS AND SEALS	141-30417-0023
15A	KIT, COMPRESSION DAMPER - ABS* (INC. - ADJUSTER KNOB)	141-26532-0022
15B	KIT, COMPRESSION DAMPER - AT (INCL. - ADJUSTER REPLACES 15A)	141-33385-0022
16	KIT, DECAL - MACHETE	141-34250-0001
17	KIT, W/LO REMOTE LOCKOUT - LEVER & CABLE	141-31815-0023
18	KIT, W/LO REMOTE LOCKOUT - ABS*	141-24535-0001
19	KIT, W/LO REMOTE LOCKOUT - WITH TOGGLE	141-24535-0001
20	KIT, REBUILD - 32MM	141-28528-0009

NOTE: 100M, CSA SHALL BE UPDATED TO 80/100/120 CSA IF SERVICE IS REQUIRED.
 - FOR 100M, LAST UPDATE, ORDER CSA KIT 141-30416-0026 AND COMPRESSION ROD KIT 141-30418-0022

NOTE: CONVERTING FROM 100 TO 1, 100M AXLE REQUIRES CASING KIT 141-30417-0023 AND EITHER ORIS AXLE KIT 141-28131-0027 OR HEX LOCK SL AXLE KIT 141-33147-0023

MACHETE 100 COMP 29 EXPLODED VIEW



MACHETE 100 COMP 29	
ITEM	PART DESCRIPTION
1	141-30443-0019 KIT, CSA 80/100/120 1-1/2 AST, 40MM - WHITE BLACK, BLACK LEG
2	141-30443-0020 KIT, CSA 80/100/120 1-1/2 TAPER STEER, 40MM - WHITE BLACK, BLACK LEG
3	141-30443-0022 KIT, CSA 130/140 1-1/2 TAPER STEER, 51MM - WHITE BLACK, BLACK LEG
4	141-30443-0027 KIT, CSA 130/140 1-1/2 AST, 40MM - WHITE BLACK, BLACK LEG
5	141-30443-0029 KIT, CSA 130/140 1-1/2 TAPER STEER, 51MM - WHITE BLACK, BLACK LEG
6	141-30443-0038 KIT, CSA 130/140 1-1/2 TAPER STEER, 51MM - WHITE BLACK, BLACK LEG
7	83-3150 KIT, AIR CAP
8	141-27988-0012 KIT, AIR PISTON SEAL
9	141-28131-0025 KIT, AIR PISTON
10	141-28131-0025 KIT, AIR PISTON
11	141-30443-0029 KIT, CSA 80/100/120 1-1/2 TAPER STEER, 40MM - WHITE BLACK, BLACK LEG
12	141-30443-0029 KIT, CSA 80/100/120 1-1/2 TAPER STEER, 40MM - WHITE BLACK, BLACK LEG
13	141-30443-0010 KIT, CSA 80/100/120 1-1/2 TAPER STEER, 40MM - WHITE BLACK, BLACK LEG
14	141-30443-0010 KIT, CSA 80/100/120 1-1/2 TAPER STEER, 40MM - WHITE BLACK, BLACK LEG
15	141-27177-0002 KIT, M10 ROD, COMP FORK W/ ABS* & ADJ. RING
16	141-33385-0001 KIT, M10 ROD, COMP FORK W/ ABS* & ADJ. RING (COMPATIBLE W/ WORK REMOTE AND CW REMOTE KIT)
17	141-33385-0001 KIT, M10 ROD, COMP FORK W/ ABS* & ADJ. RING (COMPATIBLE W/ WORK REMOTE AND CW REMOTE KIT)
18	141-28131-0024 KIT, ORIS AXLE HARDWARE
19	141-33147-0001 KIT, HEX LOCK SL AXLE (HARDWARE)
20	141-33147-0003 KIT, HEX LOCK SL AXLE HARDWARE
21	85-3944 KIT, BUSHING, 30MM
22	85-3944 KIT, BUSHING, 30MM
23	141-23391-0005 KIT, REBOUND DAMPER 80/100/120/130/140
24	141-26532-0002 KIT, COMPRESSION DAMPER, ABS* (INCL. ADJUSTOR RING)
25	141-33385-0002 KIT, COMPRESSION DAMPER, ABS* (INCL. ADJUSTOR RING, OPTION REF. PAGES 154)
26	141-24255-0001 KIT, DECA MACHETE
27	141-24255-0001 KIT, DECA MACHETE
28	193-24931-0001 KIT, M10 REMOTE LOCKOUT - ABS*
29	193-24931-0001 KIT, M10 REMOTE LOCKOUT - ABS*
30	141-33258 KIT, M10 REMOTE LOCKOUT - M10X TOGGLE
31	141-33258 KIT, M10 REMOTE LOCKOUT - M10X TOGGLE
32	141-28228-0009 KIT, REBUILD, 30MM

NOTE: 100K CSA SHALL BE UPDATED TO 80/100/120 CSA IF SERVICE IS REQUIRED.

- FOR 100K 40MM OFFSET AST UPDATE, ORDER CSA KIT 141-30443-0019 AND COMPRESSION ROD KIT 141-30418-0027
- FOR 100K 51MM OFFSET AST UPDATE, ORDER CSA KIT 141-30443-0021 AND COMPRESSION ROD KIT 141-30418-0027
- FOR 100K 40MM OFFSET 1.5T UPDATE, ORDER CSA KIT 141-30443-0020 AND COMPRESSION ROD KIT 141-30418-0027
- FOR 100K 51MM OFFSET 1.5T UPDATE, ORDER CSA KIT 141-30443-0022 AND COMPRESSION ROD KIT 141-30418-0027

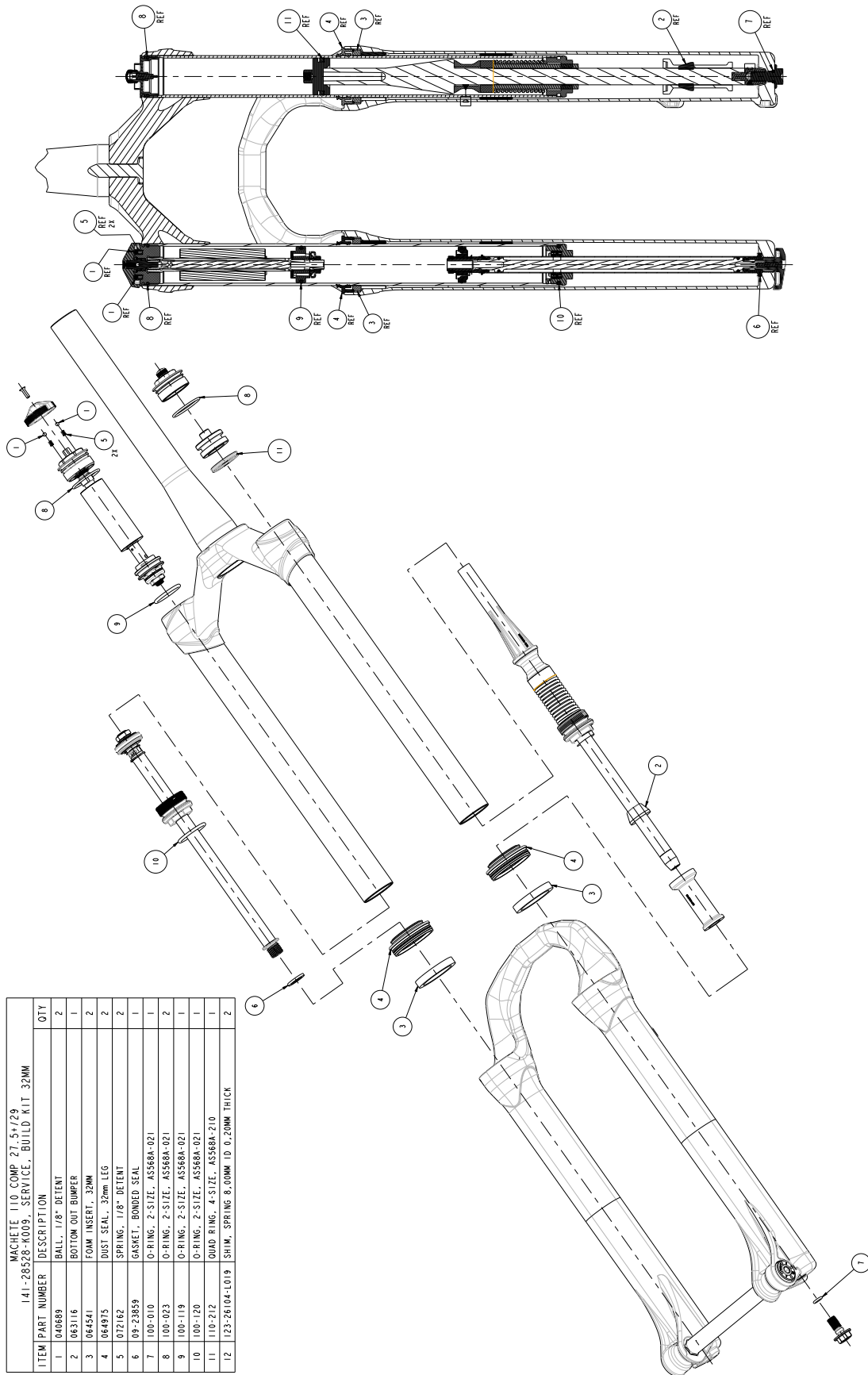
NOTE: COUNTERING FROM 9MM OR TO A 1MM AXLE REQUIRES CASTING KIT 141-30417-0003 AND EITHER ORIS AXLE KIT 141-28131-0027 OR HEX LOCK SL AXLE KIT 141-33147-0001

ORIS AND HEX LOCK
SL AXLE OPTIONS

CSA LEG LENGTH
80/100/120 : 321 REF
130/140 : 344 REF



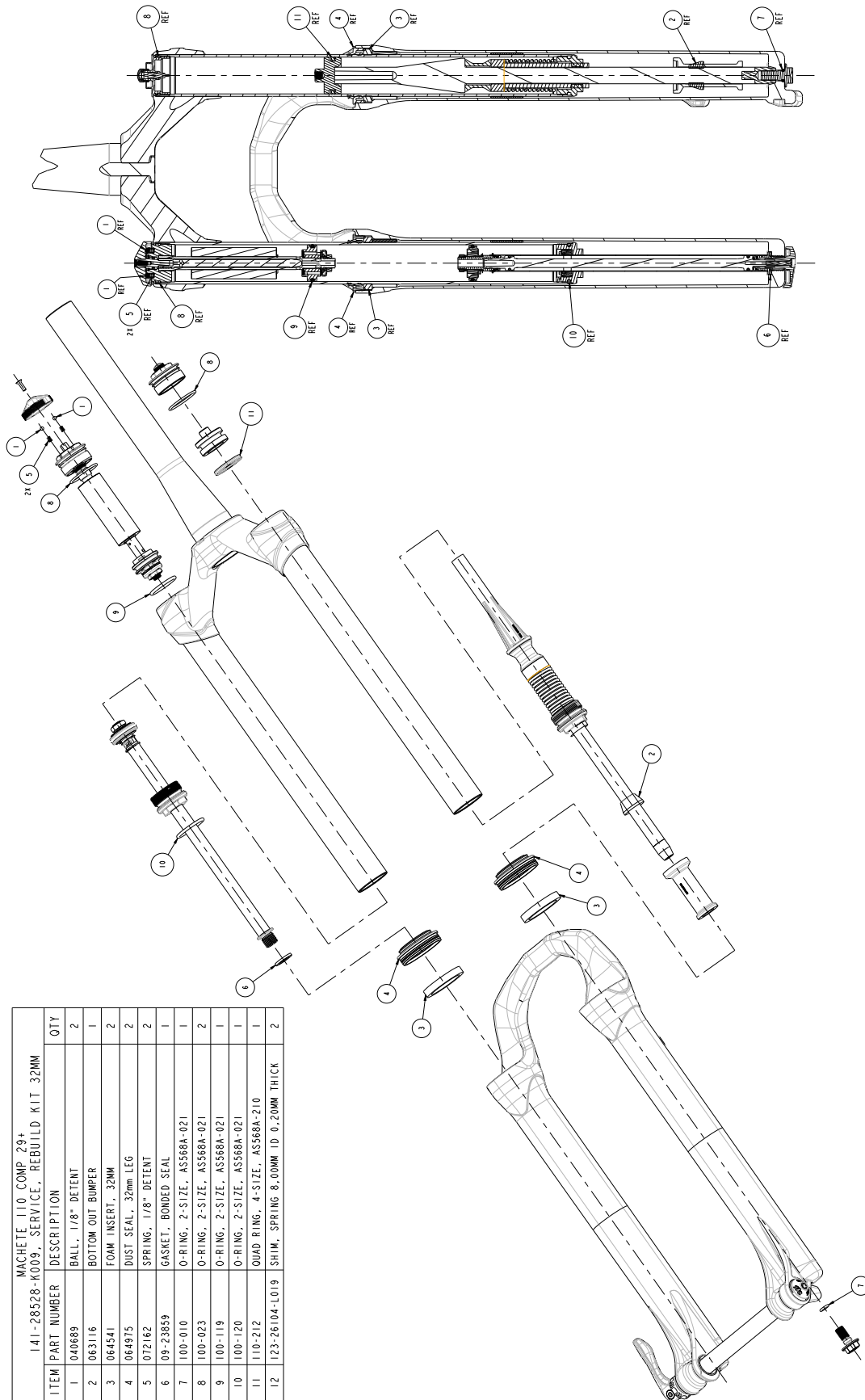
MACHETE 110 COMP 27.5+ REBUILD KIT



MACHETE 110 COMP 27.5+ 1/29
141-28528-1009. SERVICE. BUILD KIT 32MM

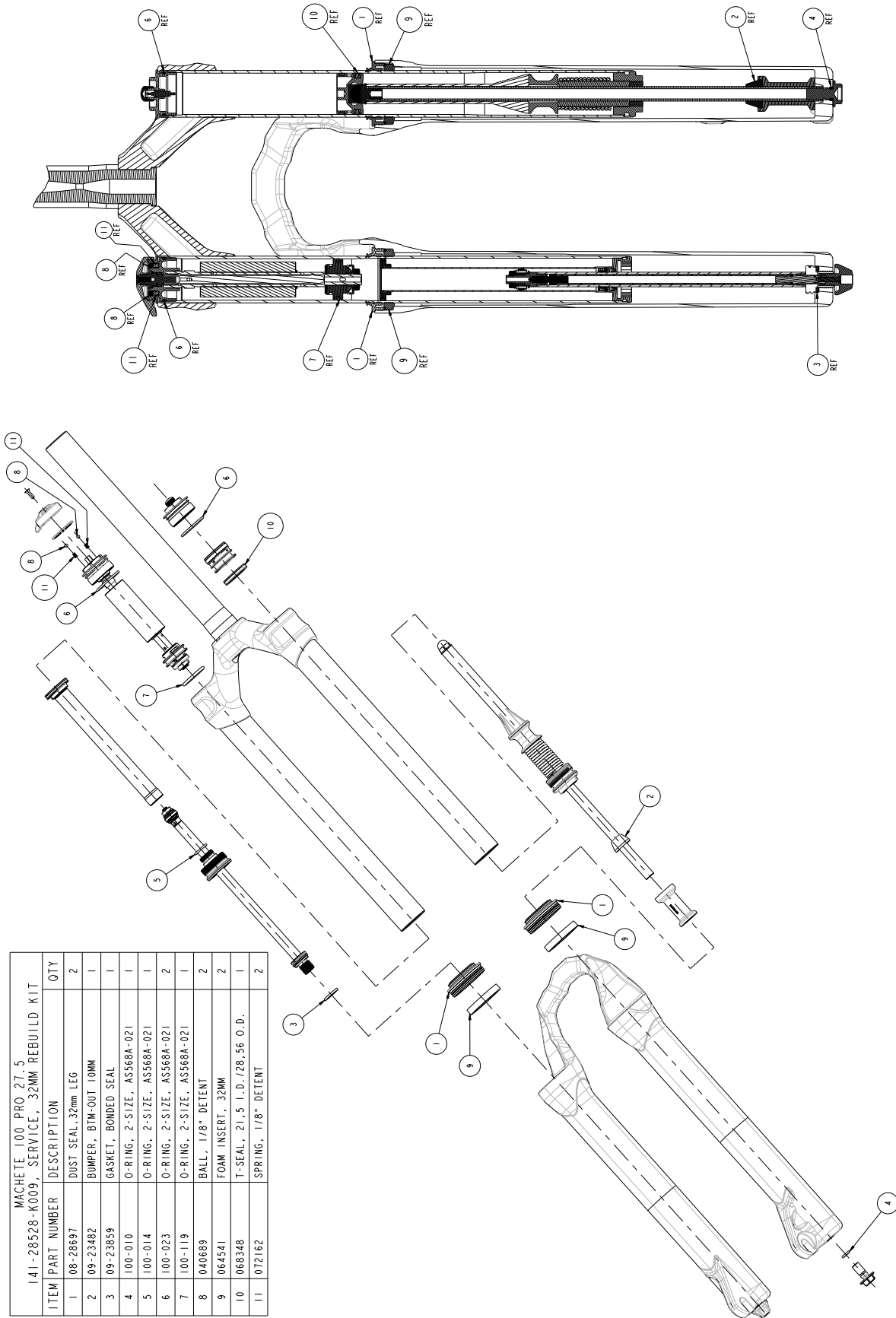
ITEM	PART NUMBER	DESCRIPTION	QTY
1	040669	BALL, 1/8" DETENT	2
2	063116	BOTTOM OUT BUMPER	1
3	064541	FOAM INSERT, 32MM	2
4	064975	DUST SEAL, 32mm LEG	2
5	072162	SPRING, 1/8" DETENT	2
6	09-23859	GASKET, BONDED SEAL	1
7	100-010	O-RING, 2-SIZE, AS568A-021	1
8	100-023	O-RING, 2-SIZE, AS568A-021	2
9	100-119	O-RING, 2-SIZE, AS568A-021	1
10	100-120	O-RING, 2-SIZE, AS568A-021	1
11	110-712	QUAD RING, 4-SIZE, AS568A-210	1
12	123-26104-1019	SHIM, SPRING 8.00MM ID 0.20MM THICK	2

MACHETE 110 COMP 29+ REBUILD KIT



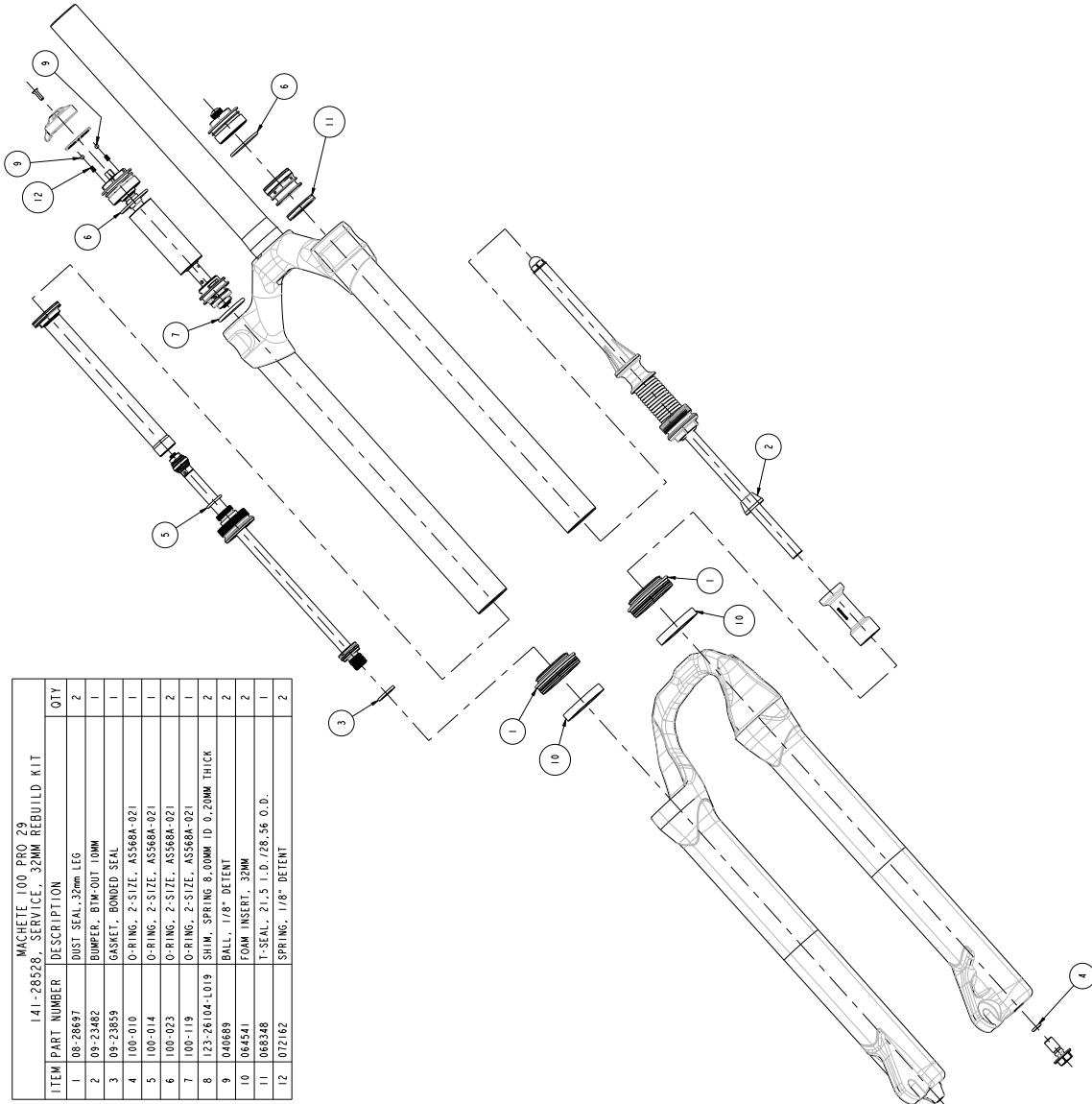
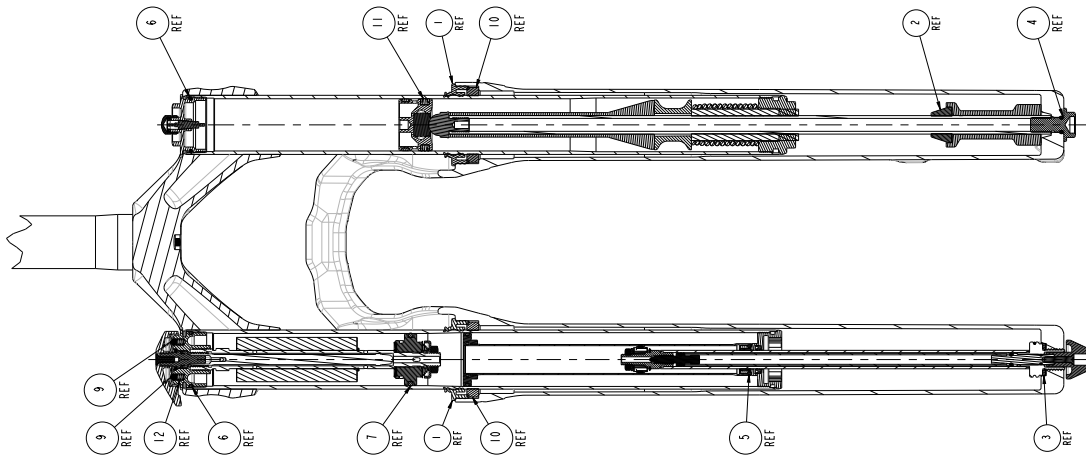
MACHETE 110 COMP 29+		
141-28528-K009, SERVICE, REBUILD KIT 32MM		
ITEM PART NUMBER	DESCRIPTION	QTY
1	BALL, 1/8" DETENT	2
2	BOTTOM OUT BUMPER	1
3	FOAM INSERT, 32MM	2
4	DUST SEAL, 32mm LEG	2
5	SPRING, 1/8" DETENT	2
6	GASKET, BONDED SEAL	1
7	O-RING, 2-SIZE, AS568A-021	1
8	O-RING, 2-SIZE, AS568A-021	2
9	O-RING, 2-SIZE, AS568A-021	1
10	O-RING, 2-SIZE, AS568A-021	1
11	QUAD RING, 4-SIZE, AS568A-210	1
12	SHIM, SPRING 8.00MM ID 0.20MM THICK	2

MACHETE PRO 27.5 REBUILD KIT



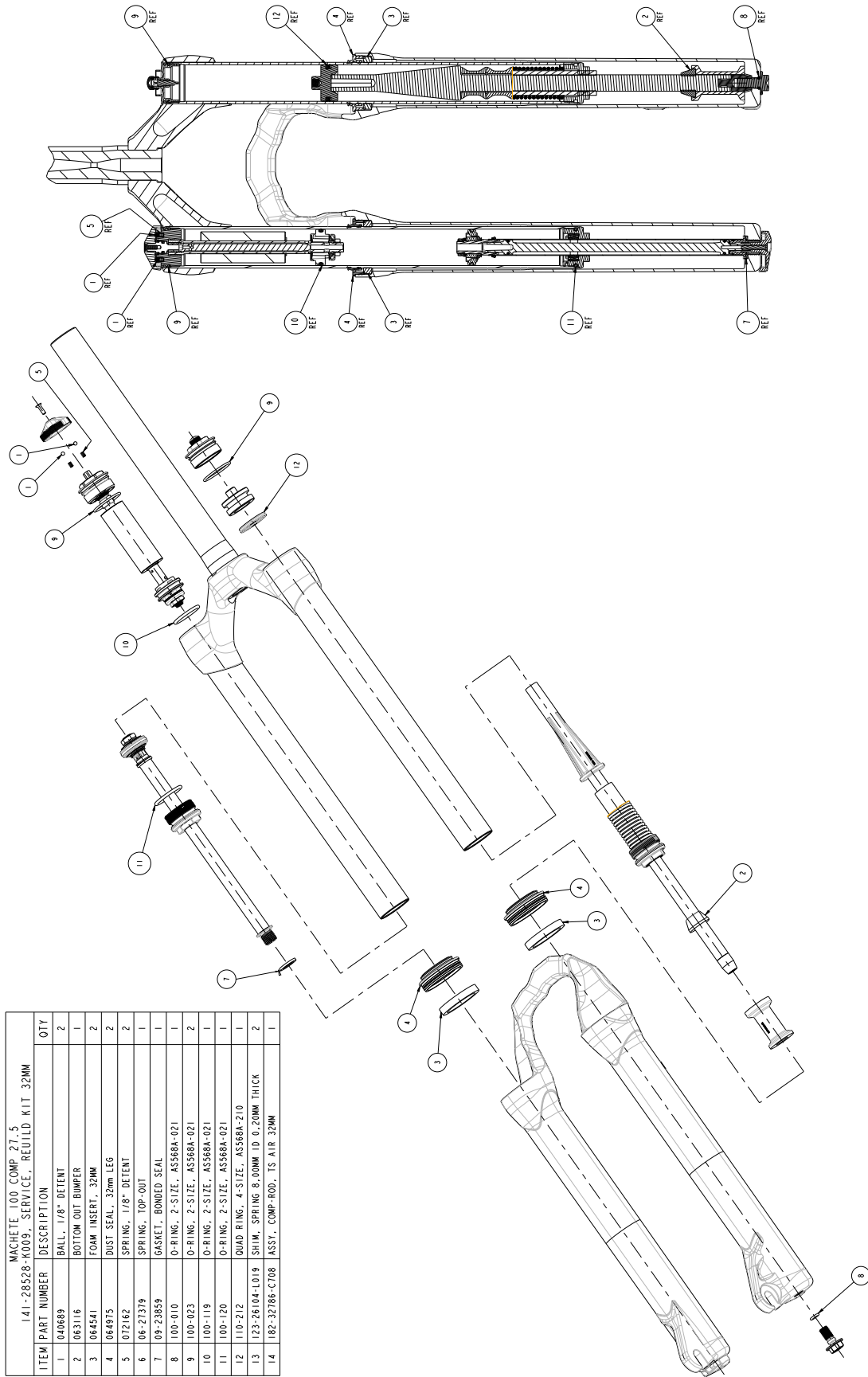
MACHETE 100 PRO 27.5 141-28528-K009, SERVICE, 32MM REBUILD KIT		
ITEM PART NUMBER	DESCRIPTION	QTY
1	08-28697	2
2	09-23482	1
3	09-23859	1
4	100-010	1
5	100-014	1
6	100-023	2
7	100-119	1
8	040689	2
9	064541	2
10	068348	1
11	072162	2

MACHETE PRO 29 REBUILD KIT



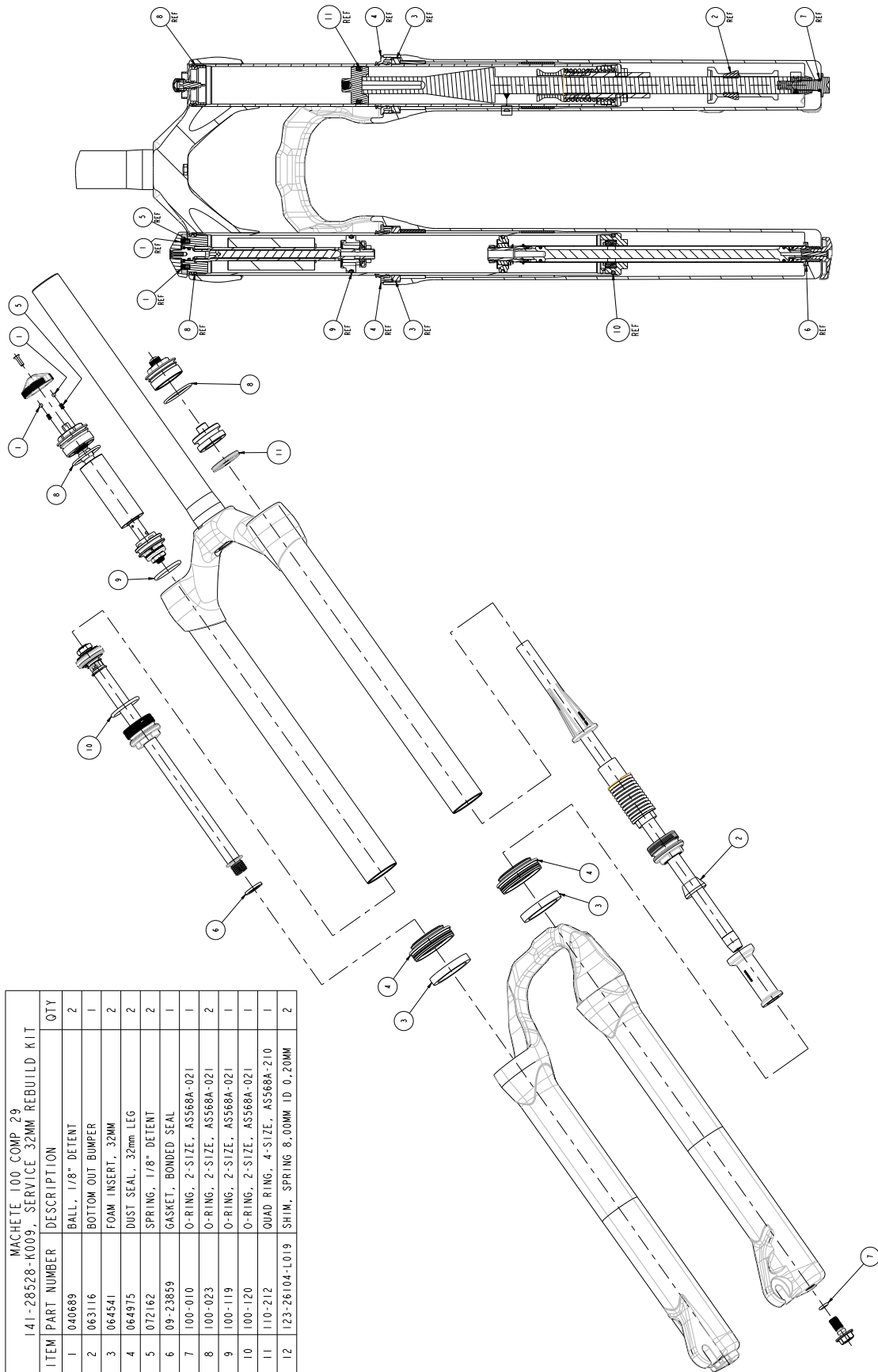
MACHETE 100 PRO 29 SERVICE, 32MM REBUILD KIT		
ITEM PART NUMBER	DESCRIPTION	QTY
1	08-28697	2
2	08-23462	1
3	08-23859	1
4	100-010	1
5	100-014	1
6	100-023	2
7	123-26104-L019	1
8	040689	2
9	064541	2
10	068348	1
11	072162	2

MACHETE COMP 27.5 REBUILD KIT



MACHETE 100 COMP 27.5			
141-28526-K009, SERVICE, REBUILD KIT 32MM			
ITEM	PART NUMBER	DESCRIPTION	QTY
1	040689	BALL, 1/8" DETENT	2
2	1063116	BOTTOM OUT BUMPER	1
3	1064541	FOAM INSERT, 32MM	2
4	064875	DUST SEAL, 32mm LEG	2
5	072162	SPRING, 1/8" DETENT	2
6	06-27379	SPRING, TOP-OUT	1
7	09-23859	GASKET, BONDED SEAL	1
8	100-010	O-RING, 2-SIZE, ASS68A-021	1
9	100-023	O-RING, 2-SIZE, ASS68A-021	2
10	100-119	O-RING, 2-SIZE, ASS68A-021	1
11	100-120	O-RING, 2-SIZE, ASS68A-021	1
12	110-212	OAD RING, 4-SIZE, ASS68A-210	1
13	123-26104-L019	SHIM, SPRING 8.00MM ID 0.20MM THICK	2
14	182-32766-C708	ASST, COMP-ROD, TS AIR 32MM	1

MACHETE COMP 29 REBUILD KIT



MACHETE 100_COMP 29			
141-28528-K009, SERVICE 32MM REBUILD KIT			
ITEM	PART NUMBER	DESCRIPTION	QTY
1	040689	BALL, 1/8" DETENT	2
2	063116	BOTTOM OUT BUMPER	1
3	064541	FOAM INSERT, 32MM	2
4	064975	DUST SEAL, 32mm LEG	2
5	072162	SPRING, 1/8" DETENT	2
6	09-23859	GASKET, BONDED SEAL	1
7	100-010	O-RING, 2-SIZE, AS568A-021	1
8	100-023	O-RING, 2-SIZE, AS568A-021	2
9	100-119	O-RING, 2-SIZE, AS568A-021	1
10	100-120	O-RING, 2-SIZE, AS568A-021	1
11	110-212	QUAD RING, 4-SIZE, AS568A-210	1
12	123-26104-L019	SHIM, SPRING 8.00MM ID 0.20MM	2

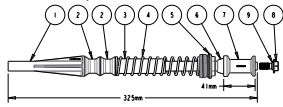
COMPRESSION ROD KIT/TRAVEL SETTINGS

Below are the possible travel settings for each model of Machete fork. NOTE: Each aftermarket Machete fork has two ranges of travel options. The crown steer assembly determines the range. A 120mm Machete can go down to 80mm and a 130mm can go up to 140mm.

141-30418-K022 CONFIGURATIONS (32MM COMP NB 27.5")

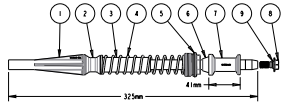
CONFIG #1: TS AIR, 80mm TRAVEL, CSA LENGTH : 32mm (MY18) MACHETE COMP NON-BOOST 27.5"

ITEM	PART NUMBER	DESCRIPTION	QTY
1	122-28233-1410	COMP ROD, INSERT MOLDED	1
2	08-24529	SPACER, SPRING	2
3	062914	BUMPER, TOP OUT	1
4	06-27379	SPRING, 24.6x2, 30x110, 0	1
5	072037-05	END CAP, DAMPER	1
6	063116	BOTTOM OUT BUMPER	1
7	121-27381-1001	SPACER, BOTTOM OUT	1
8	01-25870	SCREW, M8X1.0 STEEL	1
9	100-010	O-RING, 2-SIZE, ASS68A-021	1



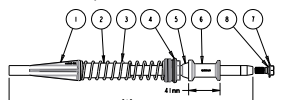
CONFIG #3: TS AIR, 100mm TRAVEL, CSA LENGTH : 32mm (MY18) MACHETE COMP NON-BOOST 27.5"

ITEM	PART NUMBER	DESCRIPTION	QTY
1	122-28233-1410	COMP ROD, INSERT MOLDED	1
2	08-24529	SPACER, SPRING	2
3	062914	BUMPER, TOP OUT	1
4	06-27379	SPRING, 24.6x2, 30x110, 0	1
5	072037-05	END CAP, DAMPER	1
6	063116	BOTTOM OUT BUMPER	1
7	121-27381-1001	SPACER, BOTTOM OUT	1
8	01-25870	SCREW, M8X1.0 STEEL	1
9	100-010	O-RING, 2-SIZE, ASS68A-021	1



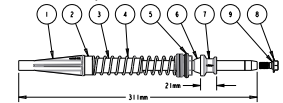
CONFIG #5: TS AIR, 120mm TRAVEL, CSA LENGTH : 32mm (NON-BOOST COMP 27.5" MACHETE)

ITEM	PART NUMBER	DESCRIPTION	QTY
1	122-28233-1412	COMP ROD, INSERT MOLDED	1
2	062914	BUMPER, TOP OUT	1
3	06-27379	SPRING, 24.6x2, 30x110, 0	1
4	072037-05	END CAP, DAMPER	1
5	063116	BOTTOM OUT BUMPER	1
6	121-27381-1001	SPACER, BOTTOM OUT	1
7	01-25870	SCREW, M8X1.0 STEEL	1
8	100-010	O-RING, 2-SIZE, ASS68A-021	1



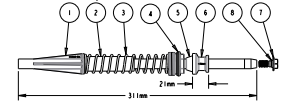
CONFIG #6: TS AIR, 130mm TRAVEL, CSA LENGTH : 34mm (NON-BOOST COMP MACHETE 27.5")

ITEM	PART NUMBER	DESCRIPTION	QTY
1	122-28233-1414	COMP ROD, INSERT MOLDED	1
2	11-25956-1002	SPACER, BOTTOM OUT 13 10 10 THK	1
3	062914	BUMPER, TOP OUT	1
4	06-27379	SPRING, 24.6x2, 30x110, 0	1
5	072037-05	END CAP, DAMPER	1
6	063116	BOTTOM OUT BUMPER	1
7	121-27381-1002	SPACER, BOTTOM OUT	1
8	01-25870	SCREW, M8X1.0 STEEL	1
9	100-010	O-RING, 2-SIZE, ASS68A-021	1



CONFIG #7: TS AIR, 140mm TRAVEL, CSA LENGTH : 34mm (NON-BOOST COMP MACHETE 27.5")

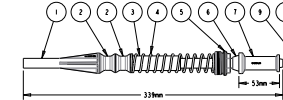
ITEM	PART NUMBER	DESCRIPTION	QTY
1	122-28233-1414	COMP ROD, INSERT MOLDED	1
2	062914	BUMPER, TOP OUT	1
3	06-27379	SPRING, 24.6x2, 30x110, 0	1
4	072037-05	END CAP, DAMPER	1
5	063116	BOTTOM OUT BUMPER	1
6	121-27381-1002	SPACER, BOTTOM OUT	1
7	01-25870	SCREW, M8X1.0 STEEL	1
8	100-010	O-RING, 2-SIZE, ASS68A-021	1



141-30418-K027 CONFIGURATIONS (32MM COMP NB 29" & ALL BT)

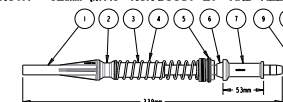
CONFIG #1: TS AIR, 80mm TRAVEL, CSA LENGTH : 32mm (MY18) NON-BOOST 29" AND ALL BOOST MACHETE COMP)

ITEM	PART NUMBER	DESCRIPTION	QTY
1	122-28233-1100	COMP ROD, INSERT MOLDED	1
2	08-24529	SPACER, SPRING	2
3	062914	BUMPER, TOP OUT	1
4	06-27379	SPRING, 24.6x2, 30x110, 0	1
5	072037-05	END CAP, DAMPER	1
6	063116	BOTTOM OUT BUMPER	1
7	121-27381-1004	SPACER, BOTTOM OUT	1
8	01-25870	SCREW, M8X1.0 STEEL	1
9	100-010	O-RING, 2-SIZE, ASS68A-021	1



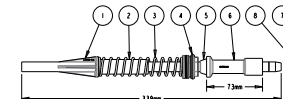
CONFIG #3: TS AIR, 100mm TRAVEL, CSA LENGTH : 32mm (MY18) NON-BOOST 29" AND ALL BOOST MACHETE COMP)

ITEM	PART NUMBER	DESCRIPTION	QTY
1	122-28233-1100	COMP ROD, INSERT MOLDED	1
2	08-24529	SPACER, SPRING	2
3	062914	BUMPER, TOP OUT	1
4	06-27379	SPRING, 24.6x2, 30x110, 0	1
5	072037-05	END CAP, DAMPER	1
6	063116	BOTTOM OUT BUMPER	1
7	121-27381-1004	SPACER, BOTTOM OUT	1
8	01-25870	SCREW, M8X1.0 STEEL	1
9	100-010	O-RING, 2-SIZE, ASS68A-021	1



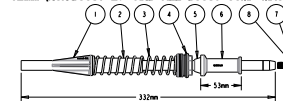
CONFIG #4: TS AIR, 100mm TRAVEL, CSA LENGTH : 30mm (NON-BOOST COMP 29" MACHETE)

ITEM	PART NUMBER	DESCRIPTION	QTY
1	122-28233-1100	COMP ROD, INSERT MOLDED	1
2	062914	BUMPER, TOP OUT	1
3	06-27379	SPRING, 24.6x2, 30x110, 0	1
4	072037-05	END CAP, DAMPER	1
5	063116	BOTTOM OUT BUMPER	1
6	121-27381-1003	SPACER, BOTTOM OUT	1
7	01-25870	SCREW, M8X1.0 STEEL	1
8	100-010	O-RING, 2-SIZE, ASS68A-021	1



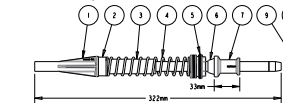
CONFIG #5: TS AIR, 120mm TRAVEL, CSA LENGTH : 32mm (NON-BOOST 29" AND ALL BOOST COMP MACHETE)

ITEM	PART NUMBER	DESCRIPTION	QTY
1	122-28233-1120	COMP ROD, INSERT MOLDED	1
2	062914	BUMPER, TOP OUT	1
3	06-27379	SPRING, 24.6x2, 30x110, 0	1
4	072037-05	END CAP, DAMPER	1
5	063116	BOTTOM OUT BUMPER	1
6	121-27381-1004	SPACER, BOTTOM OUT	1
7	01-25870	SCREW, M8X1.0 STEEL	1
8	100-010	O-RING, 2-SIZE, ASS68A-021	1



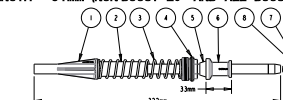
CONFIG #6: TS AIR, 130mm TRAVEL, CSA LENGTH : 34mm (NON-BOOST 29" AND ALL BOOST COMP MACHETE)

ITEM	PART NUMBER	DESCRIPTION	QTY
1	122-28233-1140	COMP ROD, INSERT MOLDED	1
2	11-25956-1002	SPACER, BOTTOM OUT 13 10 10 THK	1
3	062914	BUMPER, TOP OUT	1
4	06-27379	SPRING, 24.6x2, 30x110, 0	1
5	072037-05	END CAP, DAMPER	1
6	063116	BOTTOM OUT BUMPER	1
7	121-27381-1004	SPACER, BOTTOM OUT	1
8	01-25870	SCREW, M8X1.0 STEEL	1
9	100-010	O-RING, 2-SIZE, ASS68A-021	1



CONFIG #7: TS AIR, 140mm TRAVEL, CSA LENGTH : 34mm (NON-BOOST 29" AND ALL BOOST COMP MACHETE)

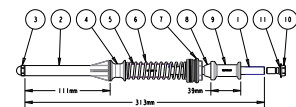
ITEM	PART NUMBER	DESCRIPTION	QTY
1	122-28233-1140	COMP ROD, INSERT MOLDED	1
2	062914	BUMPER, TOP OUT	1
3	06-27379	SPRING, 24.6x2, 30x110, 0	1
4	072037-05	END CAP, DAMPER	1
5	063116	BOTTOM OUT BUMPER	1
6	121-27381-1004	SPACER, BOTTOM OUT	1
7	01-25870	SCREW, M8X1.0 STEEL	1
8	100-010	O-RING, 2-SIZE, ASS68A-021	1



141-30418-K023 CONFIGURATIONS (32MM PRO NB 27.5")

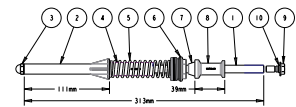
CONFIG #1: ISO AIR, 80mm TRAVEL, CSA LENGTH : 30mm (NON-BOOST 27.5" PRO MACHETE)

ITEM	PART NUMBER	DESCRIPTION	QTY
1	122-26975-1007	COMP ROD, 10MM ISO AIR	1
2	121-26976-1012	SEAT, TOP OUT ISO AIR	1
3	121-26975	ADAPTER, COMP ROD	1
4	08-23520	SPACER, SPRING	1
5	08-25881	BUMPER, TOP OUT LOW TS AIR	1
6	06-26880	SPRING, 23.1x2, 30x110	1
7	072037-04	END CAP, DAMPER	1
8	09-23482	BUMPER, 81W OUT LOW	1
9	121-27081-1001	SPACER, BOTTOM OUT	1
10	067892	SCREW, M8 X1.0	1
11	100-010	O-RING, 2-SIZE, ASS68A-021	1



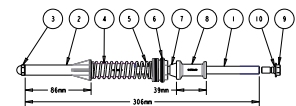
CONFIG #2: ISO AIR, 100mm TRAVEL, CSA LENGTH : 30mm (NON-BOOST 27.5" PRO MACHETE)

ITEM	PART NUMBER	DESCRIPTION	QTY
1	122-26975-1007	COMP ROD, 10MM ISO AIR	1
2	121-26976-1012	SEAT, TOP OUT ISO AIR	1
3	121-26975	ADAPTER, COMP ROD	1
4	08-26880	BUMPER, TOP OUT LOW TS AIR	1
5	06-26880	SPRING, 23.1x2, 30x110	1
6	072037-04	END CAP, DAMPER	1
7	09-23482	BUMPER, 81W OUT LOW	1
8	121-27081-1001	SPACER, BOTTOM OUT	1
9	067892	SCREW, M8 X1.0	1
10	100-010	O-RING, 2-SIZE, ASS68A-021	1



CONFIG #3: ISO AIR, 120mm TRAVEL, CSA LENGTH : 32mm (NON-BOOST 27.5" MACHETE PRO)

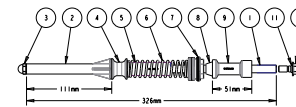
ITEM	PART NUMBER	DESCRIPTION	QTY
1	122-26975-1004	COMP ROD, 10MM ISO AIR	1
2	121-26976-1002	SEAT, TOP OUT ISO AIR	1
3	121-26975	ADAPTER, COMP ROD	1
4	08-26880	BUMPER, TOP OUT LOW TS AIR	1
5	06-26880	SPRING, 23.1x2, 30x110	1
6	072037-04	END CAP, DAMPER	1
7	09-23482	BUMPER, 81W OUT LOW	1
8	121-27081-1001	SPACER, BOTTOM OUT	1
9	067892	SCREW, M8 X1.0	1
10	100-010	O-RING, 2-SIZE, ASS68A-021	1



141-28131-K026 CONFIGURATIONS (32MM PRO NB 29" & ALL BT)

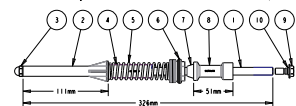
CONFIG #1: ISO AIR, 80mm TRAVEL, CSA LENGTH : 30mm (NON-BOOST 29" PRO MACHETE)

ITEM	PART NUMBER	DESCRIPTION	QTY
1	122-26975-1004	COMP ROD, 10MM ISO AIR	1
2	121-26976-1002	SEAT, TOP OUT ISO AIR	1
3	121-26975	ADAPTER, COMP ROD	1
4	08-26880	BUMPER, TOP OUT LOW TS AIR	1
5	06-26880	SPRING, 23.1x2, 30x110	1
6	072037-04	END CAP, DAMPER	1
7	09-23482	BUMPER, 81W OUT LOW	1
8	121-27081-1001	SPACER, BOTTOM OUT	1
9	067892	SCREW, M8 X1.0	1
10	100-010	O-RING, 2-SIZE, ASS68A-021	1



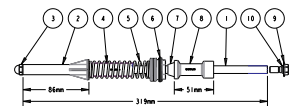
CONFIG #2: ISO AIR, 100mm TRAVEL, CSA LENGTH : 30mm (NON-BOOST 29" PRO MACHETE)

ITEM	PART NUMBER	DESCRIPTION	QTY
1	122-26975-1004	COMP ROD, 10MM ISO AIR	1
2	121-26976-1002	SEAT, TOP OUT ISO AIR	1
3	121-26975	ADAPTER, COMP ROD	1
4	08-26880	BUMPER, TOP OUT LOW TS AIR	1
5	06-26880	SPRING, 23.1x2, 30x110	1
6	072037-04	END CAP, DAMPER	1
7	09-23482	BUMPER, 81W OUT LOW	1
8	121-27081-1001	SPACER, BOTTOM OUT	1
9	067892	SCREW, M8 X1.0	1
10	100-010	O-RING, 2-SIZE, ASS68A-021	1



CONFIG #3: ISO AIR, 120mm TRAVEL, CSA LENGTH : 32mm (NON-BOOST 29" MACHETE PRO)

ITEM	PART NUMBER	DESCRIPTION	QTY
1	122-26975-1004	COMP ROD, 10MM ISO AIR	1
2	121-26976-1002	SEAT, TOP OUT ISO AIR	1
3	121-26975	ADAPTER, COMP ROD	1
4	08-26880	BUMPER, TOP OUT LOW TS AIR	1
5	06-26880	SPRING, 23.1x2, 30x110	1
6	072037-04	END CAP, DAMPER	1
7	09-23482	BUMPER, 81W OUT LOW	1
8	121-27081-1001	SPACER, BOTTOM OUT	1
9	067892	SCREW, M8 X1.0	1
10	100-010	O-RING, 2-SIZE, ASS68A-021	1





WWW.MANITOUMTB.COM WWW.HAYESCOMPONENTS.COM
5800 W DONGES BAY ROAD MEQUON WI 53092